

ALL MAJOR MAKES BRAKE PADS & SHOES

CROSS
REFERENCE
GUIDE



**MAGNET
MARELL**®

Offered by:
MOPAR®

Quality Auto Parts for All Major Makes



Offered by:
MOPAR

PADS & SHOES for All **MAKES**

Magneti Marelli Offered by Mopar® Brake Products, Quality You Can Trust

Top features and benefits of Magneti Marelli Brake Pads and Shoes:

PADS

- Ceramic and Semi-metallic matching O.E. specifications
- Exclusive friction formula to prevent noise and black dust
- 100% factory installed shims to deliver quiet braking without messy spray
- High temp moly-lube lasts the entire life of the brake pad
- Premium friction formulations eliminate the guesswork
- Premium pads and shoes eliminate brake squeal for applications where both ceramic and semi-metallic brake pads are called for
- All-inclusive stainless steel hardware package prohibits rust, lasts longer and reduces repair time
- New brake hardware reduces stopping distance and prevents brake pad wear and damage to caliper and disc
- Made in North America

SHOES

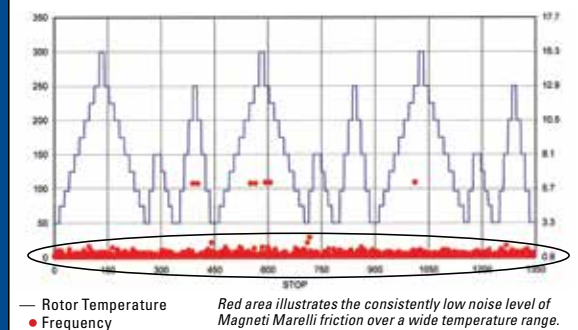
- Precise fit for optimum stopping performance
- 100% new steel with no core charge
- All levers meet O.E. specifications
- Superior durability made to last



BRAKE PAD CERTIFICATIONS AND TESTING

Magneti Marelli brake pads are tested to perform under all conditions. Lab tested and road tested to deliver safe and confident braking when needed the most. As one example, the SAE J2521 proves how our pads shift brake noise to frequencies below the level of human hearing.

SAE J2521 Brake Dynamometer Squeal Noise Matrix



**Buyer's Guide for National Business Center
All-Makes Magneti Marelli Offered by Mopar**

Product: Brakes

For Reference Only. See Application Guide for Actual Vehicle Application and Selection of Correct Part for Vehicle



Part Number	Part Description	National Popularity Ranking	Vehicles In Operations (VIO) Within National B.C.	Vehicle Applications
1AMV300785	Disc Brake Pad	A	9,693,176	Cadillac: Escalade (02-06) F, Escalade ESV (03-06) F, Escalade EXT (02-06) F; Chevrolet: Astro (03-05) F, Avalanche 1500 (02-06) F, Avalanche 2500 (02-06) R, Express 1500 (03-08) F, Express 2500 (03-09) F, Silverado 1500 (99-06) F, Silverado 1500 HD (01-07) F, Silverado 2500 (99-09) R, Silverado 2500 HD (01-10) R, Silverado 3500 (05-09) R, Silverado 3500 HD (07-10) R, Suburban 1500 (00-06) F, Suburban 2500 (00-13) R, Tahoe (00-06) F; GMC: Safari (03-05) F, Savana 1500 (03-08) F, Savana 2500 (03-08) F, Sierra 1500 (99-06) F, Sierra 1500 HD (01-07) F, Sierra 2500 (99-04) R, Sierra 2500 HD (01-10) R, Sierra 3500 (05-07) R, Sierra 3500 HD (07-10) R, Sierra C3 (2001) F, Yukon (00-06) F, Yukon XL 1500 (00-06) F, Yukon XL 2500 (00-13) R; Hummer: H2 (03-08) R
1AMVS00627	Drum Brake Shoe	B	7,705,049	Honda: Accord (90-07) R, Civic (03-13) R, CR-V (97-01) R, Fit (13-14) R
1AMV300914	Disc Brake Pad	D	6,853,765	Acura: ILX (13-15) F; Honda: Accord (03-15) F, Civic (12-14) F, CR-V (02-14) F, Element (03-11) F, Fit (13-14) F
1AMVS00771	Drum Brake Shoe	A	6,311,601	Chevrolet: Avalanche 2500 (02-06) R, Silverado 1500 (04-06) R, Silverado 1500 HD (01-07) R, Silverado 2500 (99-09) R, Silverado 2500 HD (01-10) R, Silverado 3500 (01-09) R, Silverado 3500 HD (07-10) R, Suburban 2500 (00-12) R; Ford: E-250 (03-07) R, E-250 Econoline (01-02) R, E-250 Super Duty (04-05) R, E-350 (2003) R, E-350 Club Wagon (03-05) R, E-350 Econoline (99-02) R, E-350 Econoline Club Wagon (01-02) R, E-350 Super Duty (04-07) R, E-450 Econoline Super Duty Stripped (00-02) R, E-450 Super Duty (03-07) R, F-250 Super Duty (99-04) R, F-350 Super Duty (99-04) R; GMC: Sierra 1500 (04-06) R, Sierra 1500 HD (01-07) R, Sierra 2500 (99-04) R, Sierra 2500 HD (01-09) R, Sierra 3500 (01-07) R, Sierra 3500 HD (07-10) R, Yukon XL 2500 (00-10) R; Hummer: H2 (03-08) R
1AMV400365	Disc Brake Pad	A	5,802,404	Acura: CSX (06-11) R, Legend (87-90) R, TL (95-98) R, Vigor (92-94) R; Honda: Accord (91-07) R, Civic (06-11) R, Prelude (92-01) R
1AMVF21212	Disc Brake Pad	A	5,534,877	Lexus: ES300h (13-15) R, ES350 (07-14) R; Pontiac: Vibe (09-10) R; Toyota: Avalon (08-14) R, Camry (07-14) R, Matrix (09-12) R, RAV4 (06-15) R
1AMV401212	Disc Brake Pad	A	5,378,564	Lexus: ES350 (07-12) R; Pontiac: Vibe (09-10) R; Toyota: Avalon (08-14) R, Camry (07-14) R, Matrix (09-12) R, RAV4 (06-15) R
1AMVS00752	Drum Brake Shoe	B	5,290,130	Ford: Expedition (97-02) R, F-150 (99-08) R, F-150 Heritage (2004) R; Lincoln: Blackwood (2002) R, Navigator (98-02) R, Town Car (03-08) R
1AMV300784	Disc Brake Pad	B	5,261,850	Cadillac: DeVille (01-05) F, DTS (06-11) F; Chevrolet: Avalanche 2500 (02-06) F, Express 2500 (03-14) F, Express 3500 (03-14) F, Express 4500 (09-14) F, Silverado 1500 (04-06) F, Silverado 1500 HD (01-07) F, Silverado 2500 (99-09) F, Silverado 2500 HD (01-10) F, Silverado 3500 (01-09) F, Silverado 3500 HD (07-10) F, Suburban 2500 (00-13) F; GMC: Savana 2500 (03-14) F, Savana 3500 (03-14) F, Savana 4500 (09-14) F, Sierra 1500 (04-06) F, Sierra 1500 HD (01-07) F, Sierra 2500 (99-04) F, Sierra 2500 HD (01-10) F, Sierra 3500 (01-07) F, Sierra 3500 HD (07-10) F, Yukon XL 2500 (00-13) F; Hummer: H2 (03-08) F
1AMV100369	Disc Brake Pad	A	5,157,207	Cadillac: Commercial Chassis (90-93) F, Escalade (99-00) F, Fleetwood (90-92) F; Chevrolet: Astro (90-02) F, Blazer (92-94) F, C1500 (88-99) F, C1500 Suburban (92-99) F, C2500 (88-00) F, Express 1500 (96-02) F, Express 2500 (96-02) F, K1500 (88-99) F, K1500 Suburban (92-99) F, K2500 (88-00) F, Tahoe (95-99) F; GMC: C1500 (88-99) F, C1500 Suburban (92-99) F, C2500 (88-00) F, K1500 (88-99) F, K1500 Suburban (92-99) F, K2500 (88-00) F, Safari (90-02) F, Savana 1500 (96-02) F, Savana 2500 (96-02) F, Yukon (92-99) F
1AMV301363	Disc Brake Pad	A	5,016,378	Cadillac: Escalade (08-14) F, Escalade ESV (08-14) F, Escalade EXT (08-13) F, XTS (13-14) F; Chevrolet: Avalanche (08-12) F, Express 1500 (09-14) F, Silverado 1500 (07-14) F, Suburban 1500 (08-14) F, Tahoe (08-14) F; GMC: Savana 1500 (09-14) F, Sierra 1500 (07-14) F, Yukon (08-14) F, Yukon XL 1500 (08-14) F
1AMV400834	Disc Brake Pad	B	4,924,359	Cadillac: Escalade (02-06) R, Escalade ESV (03-06) R, Escalade EXT (02-06) R; Chevrolet: Avalanche 1500 (02-06) R, Silverado 1500 HD (05-06) R, Suburban 1500 (00-06) R, Tahoe (00-06) R; GMC: Sierra 1500 (02-05) R, Sierra 1500 HD (05-06) R, Sierra C3 (2001) R, Yukon (00-06) R, Yukon XL 1500 (00-06) R
1AMV100699	Disc Brake Pad	B	4,905,047	Buick: Century (97-05) F, LeSabre (00-05) F, Riviera (97-99) F; Cadillac: DeVille (97-05) F, Eldorado (97-02) F, Seville (1997) F; Chevrolet: Impala (00-05) F, Monte Carlo (00-05) F, Venture (97-05) F; Oldsmobile: Aurora (97-03) F, Intrigue (98-02) F, Silhouette (97-04) F; Pontiac: Bonneville (00-05) F, Grand Prix (97-03) F, Montana (99-05) F, Trans Sport (97-98) F
1AMV300699	Disc Brake Pad	B	4,905,047	Buick: Century (97-05) F, LeSabre (00-05) F, Riviera (97-99) F; Cadillac: DeVille (97-05) F, Eldorado (97-02) F, Seville (1997) F; Chevrolet: Impala (00-05) F, Monte Carlo (00-05) F, Venture (97-05) F; Oldsmobile: Aurora (97-03) F, Intrigue (98-02) F, Silhouette (97-04) F; Pontiac: Bonneville (00-05) F, Grand Prix (97-03) F, Montana (99-05) F, Trans Sport (97-98) F
1AMV400698	Disc Brake Pad	A	4,550,740	Buick: Century (04-05) R, Regal (99-04) R, Rendezvous (02-07) R; Chevrolet: Impala (00-10) R, Monte Carlo (00-05) R, Venture (02-04) R; Oldsmobile: Alero (99-04) R, Intrigue (98-02) R; Pontiac: Aztek (01-05) R, Grand Am (99-05) R, Montana (02-05) R
1AMVF20698	Disc Brake Pad	A	4,550,740	Buick: Century (04-05) R, Regal (99-04) R, Rendezvous (02-07) R; Chevrolet: Impala (00-10) R, Monte Carlo (00-05) R, Venture (02-04) R; Oldsmobile: Alero (99-04) R, Intrigue (98-02) R; Pontiac: Aztek (01-05) R, Grand Am (99-05) R, Montana (02-05) R
1AMV401194	Disc Brake Pad	A	4,489,070	Cadillac: Escalade (07-14) R, Escalade ESV (07-14) R, Escalade EXT (07-13) R; Chevrolet: Avalanche (07-11) R, Silverado 1500 (07-12) R, Suburban 1500 (07-14) R, Tahoe (07-14) R; GMC: Sierra 1500 (07-12) R, Yukon (07-14) R, Yukon XL 1500 (07-14) R
1AMV40792A	Disc Brake Pad	A	4,231,920	Cadillac: DeVille (01-05) R, DTS (06-11) R; Chevrolet: Astro (03-05) R, Avalanche 1500 (2002) R, Silverado 1500 (99-04) R, Tahoe (00-02) R; GMC: Safari (03-05) R, Sierra 1500 (99-04) R, Yukon (00-02) R
1AMVS00473	Drum Brake Shoe	A	4,046,958	Cadillac: Escalade (99-00) R; Chevrolet: Blazer (87-91) R, C10 (78-86) R, C10 Suburban (78-86) R, C1500 Suburban (92-99) R, C20 (78-86) R, C20 Suburban (78-86) R, C2500 (88-00) R, Express 1500 (96-02) R, Express 2500 (96-02) R, G10 (76-95) R, G20 (76-95) R, G30 (79-80) R, K10 (78-86) R, K10 Suburban (78-86) R, K1500 (88-99) R, K1500 Suburban (92-99) R, K20 (78-86) R, K20 Suburban (79-86) R, K2500 (88-00) R, K5 Blazer (78-86) R, P10 (78-80) R, P20 (78-89) R, R10 (1987) R, R10 Suburban (87-88) R, R1500 Suburban (89-91) R, R20 (1987) R, R20 Suburban (1987) R, Tahoe (95-99) R, V10 (1987) R, V10 Suburban (87-88) R, V20 (1987) R, V20 Suburban (87-88) R; GMC: C15 (1978) R, C15 Suburban (1978) R, C1500 (79-86) R, C1500 Suburban (79-99) R, C25 (1978) R, C25 Suburban (1978) R, C2500 (79-00) R, C2500 Suburban (79-86) R, G15 (76-78) R, G1500 (79-95) R, G25 (76-78) R, G2500 (79-95) R, G3500 (79-80) R, Jimmy (78-91) R, K15 (1978) R, K15 Suburban (1978) R, K1500 (79-99) R, K1500 Suburban (79-99) R, K25 (1978) R, K2500 (79-00) R, K2500 Suburban (79-86) R, P15 (1978) R, P1500 (79-80) R, P25 (1978) R, P2500 (79-89) R, R1500 (1987) R, R2500 (1987) R, Savana 1500 (96-02) R, Savana 2500 (96-02) R, V1500 (1987) R, V2500 (1987) R, Yukon (95-99) R
1AMV301608	Disc Brake Pad	D	3,980,545	Acura: CSX (06-11) F; Honda: Accord (03-07) F, Civic (06-13) F
1AMVF11293	Disc Brake Pad	A	3,903,218	Lexus: ES300h (13-15) F, ES350 (07-14) F; Toyota: Avalon (08-14) F, Camry (07-14) F
1AMV301210	Disc Brake Pad	B	3,844,032	Pontiac: Vibe (09-10) F; Scion: xB (08-15) F, xD (08-14) F; Toyota: Corolla (09-15) F, Matrix (09-12) F, Prius V (12-14) F, RAV4 (06-15) F
1AMVS00587	Drum Brake Shoe	D	3,805,421	Toyota: Camry (87-06) R, Celica (83-85) R, RAV4 (96-02) R, Solara (99-03) R
1AMV30465A	Disc Brake Pad	A	3,802,427	Acura: EL (97-05) F; Honda: Civic (96-11) F, Insight (10-14) F

**Buyer's Guide for National Business Center
All-Makes Magneti Marelli Offered by Mopar**

Product: Brakes

For Reference Only. See Application Guide for Actual Vehicle Application and Selection of Correct Part for Vehicle



Part Number	Part Description	National Popularity Ranking	Vehicles In Operations (VIO) Within National B.C.	Vehicle Applications
1AMV301293	Disc Brake Pad	A	3,746,905	Lexus: ES350 (07-12) F; Toyota: Avalon (08-14) F, Camry (07-14) F
1AMV201033	Disc Brake Pad	D	3,414,565	Chevrolet: Cobalt (05-08) R, HHR (08-10) R, Malibu (04-12) R; Pontiac: G5 (07-10) R, G6 (05-10) R, Pursuit (2006) R; Saturn: Aura (07-09) R, Ion (04-07) R
1AMVF21033	Disc Brake Pad	D	3,414,565	Chevrolet: Cobalt (05-08) R, HHR (08-10) R, Malibu (04-12) R; Pontiac: G5 (07-10) R, G6 (05-10) R, Pursuit (2006) R; Saturn: Aura (07-09) R, Ion (04-07) R
1AMV400883	Disc Brake Pad	B	3,396,584	Buick: Enclave (08-12) R, Rainier (04-07) R; Chevrolet: SSR (04-06) R, Trailblazer (02-09) R, Trailblazer EXT (02-06) R, Traverse (09-13) R; GMC: Acadia (07-14) R, Envoy (02-09) R, Envoy XL (02-06) R, Envoy XUV (04-05) R; Isuzu: Ascender (03-08) R; Oldsmobile: Bravada (02-04) R; Saab: 9-7x (05-08) R; Saturn: Outlook (07-10) R
1AMV200879	Disc Brake Pad	A	3,383,204	Ford: Expedition (97-02) R, F-150 (99-03) R, F-150 Heritage (2004) R, F-250 (97-99) R; Lincoln: Blackwood (2002) R, Navigator (98-02) R, Town Car (03-08) R
1AMVS00636	Drum Brake Shoe	A	3,289,693	Buick: Century (93-03) R, LeSabre (91-99) R, Park Avenue (92-96) R; Cadillac: Commercial Chassis (92-93) R, DeVille (92-93) R, Fleetwood (1992) R; Chevrolet: Cavalier (96-99) R, Lumina (95-01) R, Lumina APV (92-96) R, Monte Carlo (95-99) R, Venture (97-05) R; Oldsmobile: 88 (92-99) R, 98 (92-96) R, Cutlass Ciera (93-96) R, Cutlass Cruiser (93-94) R, Delta 88 (1991) R, LSS (96-99) R, Regency (97-98) R, Silhouette (92-04) R; Pontiac: Bonneville (91-99) R, Montana (99-05) R, Trans Sport (92-98) R
1AMV40508Y	Disc Brake Pad	A	3,281,643	Buick: LaCrosse (08-09) R, LeSabre (00-05) R, Park Avenue (97-05) R, Regal (94-98) R, Riviera (92-99) R; Cadillac: Allante (1993) R, DeVille (94-05) R, Eldorado (92-02) R, Seville (92-97) R; Chevrolet: Lumina (95-99) R, Monte Carlo (95-07) R; Oldsmobile: Aurora (95-03) R, Cutlass Supreme (94-97) R, Silhouette (02-04) R, Toronado (1992) R; Pontiac: Bonneville (00-05) R, Grand Prix (94-03) R
1AMVF11044	Disc Brake Pad	D	3,236,243	Ford: Escape (13-15) F, Focus (05-14) F; Mazda: 3 (04-13) F, 5 (06-14) F; Volvo: C30 (08-13) F, C70 (06-12) F, S40 (05-12) F, V50 (05-11) F
1AMVS00593	Drum Brake Shoe	A	3,233,954	Chevrolet: Blazer (92-94) R, C1500 (88-99) R, K1500 (88-99) R, Tahoe (95-99) R; GMC: C1500 (88-99) R, K1500 (88-99) R, Yukon (92-99) R
1AMV100503	Disc Brake Pad	A	3,215,723	Acura: CL (97-99) F, Integra (97-01) F, Legend (91-95) F, NSX (91-05) F, RL (96-98) F, TL (95-98) F, Vigor (92-94) F; Honda: Accord (91-02) F, CR-V (97-01) F, Odyssey (95-98) F, Prelude (93-01) F; Isuzu: Oasis (96-99) F
1AMV300976	Disc Brake Pad	C	3,154,099	Lexus: GX460 (10-12) F, GX470 (03-09) F; Toyota: 4Runner (03-12) F, FJ Cruiser (07-12) F, Sequoia (03-07) F, Tacoma (05-15) F, Tundra (00-06) F
1AMVF21095	Disc Brake Pad	A	3,102,945	Chevrolet: Cobalt (2010) R; Ford: C-Max (13-15) R, Escape (13-15) R, Focus (12-14) R; Jaguar: S-Type (06-08) R, Super V8 (06-08) R, Vanden Plas (06-08) R, XF (09-15) R, XJ (11-15) R, XJ8 (06-09) R, XJR (06-09) R, XK (07-15) R, XKR (2007) R; Mazda: 3 (06-13) R, 5 (06-14) R; Pontiac: Solstice (06-09) R; Saab: 9-3 (03-11) R, 9-3X (10-11) R; Saturn: Sky (07-10) R; Volvo: C30 (08-13) R, C70 (06-12) R, S40 (05-12) R, V50 (05-11) R
1AMV100948	Disc Brake Pad	C	3,037,005	Acura: RSX (02-06) F; Honda: Civic (93-11) F, Civic del Sol (94-95) F, Fit (07-08) F
1AMV100652	Disc Brake Pad	A	2,964,737	Ford: Explorer (95-01) F, Ranger (95-02) F; Mazda: B2300 (95-02) F, B2500 (98-01) F, B3000 (95-02) F, B4000 (95-02) F; Mercury: Mountaineer (97-01) F
1AMV100702	Disc Brake Pad	B	2,964,672	Ford: Expedition (97-02) F, F-150 (99-03) F, F-150 Heritage (2004) F; Lincoln: Navigator (98-02) F
1AMVS00913	Drum Brake Shoe	A	2,957,563	Honda: Civic (06-14) R, Fit (09-13) R, Insight (10-14) R
1AMV100679	Disc Brake Pad	A	2,784,987	Ford: F-150 (97-03) F, F-150 Heritage (2004) F; Lincoln: Blackwood (2002) F
1AMV100154	Disc Brake Pad	A	2,765,529	Buick: Century (78-81) F, Regal (78-87) F, Riviera (79-85) F; Cadillac: Eldorado (79-85) F, Seville (80-85) F; Chevrolet: Blazer (95-97) F, Camaro (82-92) F, El Camino (78-87) F, LLV (87-95) F, Malibu (78-83) F, Monte Carlo (78-88) F, S10 (82-03) F, S10 Blazer (83-94) F; GMC: Caballero (78-87) F, Jimmy (92-97) F, S15 (82-90) F, S15 Jimmy (83-91) F, Sonoma (91-03) F; Isuzu: Hombre (96-00) F; Oldsmobile: Bravada (91-96) F, Cutlass (85-87) F, Toronado (79-85) F; Pontiac: Bonneville (82-86) F, Firebird (82-92) F, Grand Prix (78-87) F, LeMans (78-81) F
1AMVS00576	Drum Brake Shoe	A	2,716,822	Acura: EL (97-00) R; Honda: Accord (82-89) R, Civic (92-05) R, Fit (07-08) R, Prelude (1983) R
1AMV401423	Disc Brake Pad	B	2,663,989	Lexus: CT200h (11-12) R; Pontiac: Vibe (09-10) R; Toyota: Corolla (09-15) R, Matrix (09-12) R, Prius (10-13) R
1AMV300465	Disc Brake Pad	A	2,609,977	Acura: CL (97-99) F; Honda: Accord (90-02) F
1AMV300833	Disc Brake Pad	A	2,524,822	Ford: Explorer (01-05) F, Explorer Sport Trac (01-05) F, Ranger (03-11) F; Mazda: B2300 (03-08) F, B3000 (03-07) F, B4000 (03-09) F; Mercury: Mountaineer (02-05) F
1AMVS00599	Drum Brake Shoe	A	2,484,515	Eagle: Premier (88-89) R; Ford: Taurus (93-07) R; Hyundai: Sonata (90-93) R; Mercury: Sable (93-05) R
1AMV401095	Disc Brake Pad	A	2,477,977	Chevrolet: Cobalt (2010) R; Ford: Escape (13-15) R, Focus (2012) R; Jaguar: S-Type (06-08) R, Super V8 (06-08) R, Vanden Plas (06-08) R, XF (09-15) R, XJ (11-15) R, XJ8 (06-09) R, XJR (06-09) R, XK (07-15) R, XKR (2007) R; Mazda: 3 (06-13) R, 5 (06-14) R; Pontiac: Solstice (06-09) R; Saab: 9-3 (05-11) R, 9-3X (10-11) R; Saturn: Sky (07-10) R; Volvo: C30 (08-12) R, C70 (06-12) R, S40 (05-12) R, V50 (05-11) R
1AMV300815	Disc Brake Pad	A	2,472,668	Nissan: Altima (07-13) F, Maxima (00-01) F, Sentra (07-12) F
1AMVS00723	Drum Brake Shoe	A	2,467,056	Ford: E-150 (2003) R, E-150 Club Wagon (2003) R, E-150 Econoline (97-02) R, E-150 Econoline Club Wagon (97-02) R, Explorer Sport Trac (01-02) R, F-150 (97-01) R; Lincoln: Town Car (98-02) R
1AMV200667	Disc Brake Pad	A	2,413,760	Ford: Explorer (95-03) R, Ranger (03-05) R; Mercury: Mountaineer (97-01) R
1AMVS00589	Drum Brake Shoe	C	2,402,918	Toyota: 4Runner (87-00) R, Pickup (86-95) R, T100 (93-98) R, Tacoma (95-04) R, Tundra (00-02) R
1AMV401288	Disc Brake Pad	C	2,382,052	Infiniti: FX35 (09-12) R, G35 (07-08) R, G37 (08-13) R, M35 (2010) R, M45 (2010) R; Nissan: Altima (07-09) R, Rogue (08-13) R, Rogue Select (14-15) R, Sentra (07-12) R
1AMV400905	Disc Brake Pad	C	2,378,898	Infiniti: EX35 (08-12) R, FX35 (03-08) R, FX45 (03-08) R, G35 (03-06) R, M35 (06-09) R, M45 (06-09) R; Nissan: 350Z (03-08) R, 370Z (09-13) R, Altima (02-06) R, Maxima (04-08) R, Murano (03-07) R, Quest (04-09) R
1AMV200610	Disc Brake Pad	A	2,377,537	Ford: Taurus (93-05) R; Lincoln: Continental (93-02) R; Mercury: Sable (93-05) R
1AMV301414	Disc Brake Pad	A	2,358,264	Ford: Expedition (10-15) F, F-150 (10-14) F; Lincoln: Navigator (11-15) F
1AMVS00704	Drum Brake Shoe	D	2,325,770	Ford: Ranger (95-09) R; Mazda: B2300 (95-08) R, B2500 (98-01) R, B3000 (95-07) R, B4000 (95-09) R
1AMVS00705	Drum Brake Shoe	D	2,325,770	Ford: Ranger (95-09) R; Mazda: B2300 (95-08) R, B2500 (98-01) R, B3000 (95-07) R, B4000 (95-09) R
1AMV201012	Disc Brake Pad	D	2,315,544	Ford: F-150 (04-09) R; Lincoln: Mark LT (06-07) R
1AMVS00783	Drum Brake Shoe	B	2,310,283	Nissan: 350Z (03-08) R, Altima (02-09) R, Maxima (04-12) R
1AMV401086	Disc Brake Pad	D	2,245,586	Acura: RDX (10-12) R; Honda: Accord Crosstour (10-11) R, CR-V (05-14) R, Crosstour (2012) R
1AMV301092	Disc Brake Pad	A	2,220,639	Cadillac: Escalade (2007) F, Escalade ESV (2007) F, Escalade EXT (2007) F; Chevrolet: Avalanche (2007) F, Silverado 1500 (05-07) F, Suburban 1500 (2007) F, Tahoe (2007) F; GMC: Sierra 1500 (05-07) F, Yukon (2007) F, Yukon XL 1500 (2007) F

**Buyer's Guide for National Business Center
All-Makes Magneti Marelli Offered by Mopar**

Product: Brakes

For Reference Only. See Application Guide for Actual Vehicle Application and Selection of Correct Part for Vehicle



Part Number	Part Description	National Popularity Ranking	Vehicles In Operations (VIO) Within National B.C.	Vehicle Applications
1AMV100370	Disc Brake Pad	C	2,194,747	Chevrolet: C1500 Suburban (94-99) F, C2500 (89-00) F, C2500 Suburban (92-99) F, C3500 (88-00) F, Express 2500 (96-02) F, Express 3500 (96-00) F, K1500 Suburban (94-99) F, K2500 (88-00) F, K2500 Suburban (92-99) F, K3500 (88-99) F, Tahoe (95-99) F; GMC: C1500 Suburban (94-99) F, C2500 (89-00) F, C2500 Suburban (92-99) F, C3500 (88-00) F, K1500 Suburban (94-99) F, K2500 (88-00) F, K2500 Suburban (92-99) F, K3500 (88-00) F, Savana 2500 (96-02) F, Yukon (95-99) F
1AMV200813	Disc Brake Pad	D	2,164,923	Hyundai: Azera (06-09) R, Elantra (07-10) R, Santa Fe (01-06) R, Sonata (99-08) R, Tucson (05-09) R, XG300 (2001) R, XG350 (02-05) R; Kia: Amanti (04-06) R, Magentis (01-03) R, Optima (01-10) R, Sportage (05-10) R
1AMVS00804	Drum Brake Shoe	A	2,160,677	Toyota: Sienna (04-10) R, Tacoma (05-15) R
1AMV300707	Disc Brake Pad	B	2,159,999	Lexus: ES300 (97-01) F, RX300 (99-01) F; Toyota: Avalon (98-04) F, Camry (97-01) F, Solara (99-03) F
1AMV40974A	Disc Brake Pad	C	2,146,265	Cadillac: Escalade (03-06) R; Chevrolet: Avalanche 1500 (03-06) R, Express 1500 (03-12) R, Express 2500 (03-09) R, Suburban 1500 (03-06) R, Tahoe (03-06) R; GMC: Savana 1500 (03-14) R, Savana 2500 (03-08) R, Yukon (03-06) R, Yukon XL 1500 (03-06) R
1AMV301159	Disc Brake Pad	A	2,137,607	Buick: Allure (08-09) F, LaCrosse (08-09) F, Lucerne (06-11) F; Cadillac: DTS (06-11) F; Chevrolet: Impala (06-13) F, Monte Carlo (06-07) F
1AMVF11159	Disc Brake Pad	A	2,137,607	Buick: Allure (08-09) F, LaCrosse (08-09) F, Lucerne (06-11) F; Cadillac: DTS (06-11) F; Chevrolet: Impala (06-13) F, Monte Carlo (06-07) F
1AMV101083	Disc Brake Pad	A	2,122,595	Ford: F-150 (04-08) F; Lincoln: Mark LT (06-07) F
1AMV10815A	Disc Brake Pad	A	2,118,087	Infiniti: G35 (03-05) F, I35 (02-04) F; Nissan: 350Z (03-05) F, Altima (02-06) F, Sentra (13-15) F, Versa (07-12) F
1AMV101050	Disc Brake Pad	A	2,112,361	Buick: Regal (12-14) F; Cadillac: ATS (13-14) F, CTS (04-07) F, STS (06-09) F, XTS (13-14) F; Chevrolet: Camaro (2010) F; Ford: GT (05-06) F, Mustang (07-14) F; Hyundai: Genesis Coupe (10-14) F; Mitsubishi: Lancer (03-14) F; Pontiac: G8 (2009) F; Subaru: Impreza (04-14) F; Volvo: S60 (04-07) F, V70 (04-07) F
1AMVS00745	Drum Brake Shoe	B	2,096,572	Ford: Crown Victoria (96-02) R, Explorer (96-01) R; Lincoln: Town Car (96-02) R; Mercury: Grand Marquis (96-02) R
1AMV100924	Disc Brake Pad	D	2,082,918	Hyundai: Elantra (07-10) F, Sonata (03-10) F, Tiburon (03-08) F, Tucson (05-09) F; Kia: Optima (03-10) F, Soul (10-12) F, Sportage (05-10) F
1AMV100726	Disc Brake Pad	B	2,082,249	Chevrolet: Blazer (97-04) F, S10 (98-04) F; GMC: Jimmy (97-05) F, Sonoma (98-04) F; Isuzu: Hombre (98-00) F; Oldsmobile: Bravada (97-01) F
1AMV200729	Disc Brake Pad	A	2,082,249	Chevrolet: Blazer (97-04) R, S10 (98-04) R; GMC: Jimmy (97-05) R, Sonoma (98-04) R; Isuzu: Hombre (98-00) R; Oldsmobile: Bravada (97-01) R
1AMV401114	Disc Brake Pad	D	2,078,023	Subaru: Forester (09-15) R, Impreza (08-14) R, Legacy (05-14) R, Outback (05-14) R, XV Crosstrek (13-14) R
1AMVS00855	Drum Brake Shoe	C	2,067,684	Chevrolet: Silverado 1500 (05-08) R; GMC: Sierra 1500 (05-08) R
1AMV401393	Disc Brake Pad	B	2,043,745	Infiniti: G25 (11-12) R; Nissan: Altima (10-14) R, Leaf (11-15) R, Maxima (09-14) R, Sentra (13-15) R
1AMV301421	Disc Brake Pad	B	2,043,145	Buick: LaCrosse (10-14) F, Regal (11-14) F; Chevrolet: Equinox (10-14) F, Impala (2014) F, Malibu (2014) F; GMC: Terrain (10-14) F; Saab: 9-5 (2011) F
1AMVS00945	Drum Brake Shoe	C	2,028,652	Scion: xD (08-14) R; Toyota: Corolla (09-15) R, Prius C (12-14) R
1AMV20325Y	Disc Brake Pad	A	1,985,242	Lexus: ES300 (92-99) R, RX300 (99-03) R; Toyota: Camry (88-99) R, Celica (88-93) R, Solara (1999) R
1AMV401275	Disc Brake Pad	C	1,967,171	Chevrolet: Captiva Sport (12-14) R, Equinox (07-14) R; GMC: Terrain (10-14) R; Pontiac: Torrent (07-09) R; Saturn: Vue (08-09) R; Suzuki: XL-7 (07-09) R
1AMV300906	Disc Brake Pad	B	1,959,375	Lexus: ES300 (02-03) F, ES330 (04-06) F; Toyota: Avalon (05-07) F, Camry (05-06) F, Sienna (04-10) F, Solara (04-08) F
1AMVS00753	Drum Brake Shoe	D	1,956,433	Scion: xA (04-06) R, xB (04-06) R; Toyota: Celica (00-05) R, Corolla (03-06) R, Prius (01-09) R
1AMV301089	Disc Brake Pad	B	1,928,680	Acura: RDX (07-12) F; Honda: CR-V (07-11) F, Odyssey (05-10) F
1AMVS00505	Drum Brake Shoe	A	1,919,285	Toyota: Pickup (79-95) R, Previa (91-94) R, RAV4 (98-02) R, Tacoma (95-04) R, Van (84-89) R
1AMV300923	Disc Brake Pad	D	1,916,486	Pontiac: Vibe (03-08) F; Toyota: Corolla (03-08) F, Matrix (03-08) F
1AMV40885A	Disc Brake Pad	D	1,915,946	Lexus: ES300 (02-03) R, ES330 (04-06) R; Toyota: Camry (02-06) R, Highlander (01-03) R
1AMV101028	Disc Brake Pad	D	1,914,871	Chevrolet: Cobalt (05-07) F, HHR (08-10) F, Malibu (04-06) F; Pontiac: G5 (07-08) F, G6 (05-07) F, Pursuit (2006) F, Solstice (06-09) F; Saturn: Ion (04-07) F, Sky (07-10) F
1AMV301028	Disc Brake Pad	D	1,914,871	Chevrolet: Cobalt (05-07) F, HHR (08-10) F, Malibu (04-06) F; Pontiac: G5 (07-08) F, G6 (05-07) F, Pursuit (2006) F, Solstice (06-09) F; Saturn: Ion (04-07) F, Sky (07-10) F
1AMVS00451	Drum Brake Shoe	B	1,869,250	Chevrolet: C1500 Suburban (94-99) R, C20 (76-86) R, C20 Pickup (1974) R, C20 Suburban (73-86) R, C2500 (89-00) R, C2500 Suburban (92-99) R, C30 (76-80) R, C3500 (88-96) R, Express 2500 (96-02) R, G30 (76-96) R, G30 Van (1974) R, K1500 Suburban (94-99) R, K20 (76-86) R, K20 Pickup (1974) R, K20 Suburban (73-86) R, K2500 (88-00) R, K2500 Suburban (92-99) R, K3500 (88-96) R, P20 (76-89) R, P30 (75-99) R, P30 Van (1974) R, R20 (87-88) R, R20 Suburban (87-88) R, R2500 (1989) R, R2500 Suburban (89-91) R, V20 (1987) R, V20 Suburban (87-88) R, V2500 Suburban (89-91) R; GMC: C1500 Suburban (94-99) R, C25 (76-78) R, C25 Suburban (76-78) R, C2500 (79-00) R, C2500 Suburban (79-99) R, C35 (76-78) R, C3500 (79-96) R, G35 (76-78) R, G3500 (79-95) R, K1500 Suburban (94-99) R, K25 (76-78) R, K25 Suburban (76-78) R, K2500 (79-00) R, K2500 Suburban (79-99) R, K3500 (88-96) R, P25 (76-78) R, P2500 (79-89) R, P35 (75-78) R, P3500 (79-99) R, R2500 (87-89) R, Savana 2500 (96-02) R
1AMV301324	Disc Brake Pad	A	1,848,952	Lexus: RX350 (10-15) F, RX450h (10-14) F; Toyota: Highlander (08-15) F, Sienna (11-15) F
1AMV101164	Disc Brake Pad	A	1,844,011	Ford: Fusion (06-12) F; Lincoln: MKZ (07-12) F, Zephyr (2006) F; Mazda: 6 (06-12) F; Mercury: Milan (06-11) F
1AMV401161	Disc Brake Pad	B	1,844,011	Ford: Fusion (06-12) R; Lincoln: MKZ (07-12) R, Zephyr (2006) R; Mazda: 6 (06-12) R; Mercury: Milan (06-11) R
1AMVS00960	Drum Brake Shoe	B	1,819,632	Chevrolet: Silverado 1500 (09-13) R; GMC: Sierra 1500 (09-13) R
1AMV301160	Disc Brake Pad	A	1,816,184	Chevrolet: HHR (06-10) F, Malibu (07-12) F; Pontiac: G6 (08-10) F; Saturn: Aura (07-09) F
1AMVF11160	Disc Brake Pad	A	1,816,184	Chevrolet: HHR (06-10) F, Malibu (07-12) F; Pontiac: G6 (08-10) F; Saturn: Aura (07-09) F
1AMV100824	Disc Brake Pad	A	1,810,132	Ford: Excursion (00-05) F, F-250 Super Duty (99-04) F, F-350 Super Duty (99-04) F
1AMV200757	Disc Brake Pad	A	1,810,132	Ford: Excursion (00-05) R, F-250 Super Duty (99-04) R, F-350 Super Duty (99-04) R
1AMV100673	Disc Brake Pad	A	1,771,987	Buick: Skylark (90-98) F; Chevrolet: Beretta (92-96) F, Cavalier (92-05) F, Corsica (92-96) F; Oldsmobile: Achieva (92-98) F, Cutlass Calais (90-91) F; Pontiac: Grand Am (90-98) F, Sunbird (92-94) F, Sunfire (95-05) F
1AMVS00747	Drum Brake Shoe	C	1,766,393	Ford: Focus (00-11) R
1AMV40828X	Disc Brake Pad	C	1,747,111	Toyota: Avalon (06-07) R, Camry (02-06) R, Solara (04-08) R
1AMV101044	Disc Brake Pad	D	1,731,035	Ford: Focus (05-07) F; Mazda: 3 (04-13) F, 5 (06-14) F; Volvo: C30 (08-12) F, C70 (06-12) F, S40 (05-12) F, V50 (05-11) F

**Buyer's Guide for National Business Center
All-Makes Magneti Marelli Offered by Mopar
Product: Brakes**



For Reference Only. See Application Guide for Actual Vehicle Application and Selection of Correct Part for Vehicle

Part Number	Part Description	National Popularity Ranking	Vehicles In Operations (VIO) Within National B.C.	Vehicle Applications
1AMV300829	Disc Brake Pad	D	1,682,355	Acura: RSX (02-06) F; Honda: Civic (06-11) F, S2000 (00-09) F
1AMV301211	Disc Brake Pad	B	1,631,658	Pontiac: Vibe (09-10) F; Toyota: Matrix (09-12) F, RAV4 (06-15) F
1AMV401451	Disc Brake Pad	A	1,601,663	Honda: Accord (10-15) R
1AMV400536	Disc Brake Pad	B	1,566,133	Acura: Legend (91-95) R, RDX (07-12) R, RL (96-04) R, TL (99-08) R, TSX (04-08) R; Honda: CR-V (02-04) R, Element (03-11) R, Odyssey (95-98) R; Isuzu: Oasis (96-99) R
1AMV100436	Disc Brake Pad	A	1,554,287	Toyota: 4Runner (88-02) F, Pickup (88-95) F, T100 (93-98) F, Tacoma (95-98) F
1AMV401544	Disc Brake Pad	B	1,531,354	Hyundai: Accent (12-14) R, Elantra (11-15) R, Elantra Coupe (13-14) R, Elantra GT (13-14) R, Veloster (12-15) R; Kia: Forte (2014) R, Optima (2014) R, Rio (12-14) R, Soul (2014) R
1AMV200802	Disc Brake Pad	A	1,529,027	Ford: E-250 (03-07) R, E-250 Econoline (01-02) R, E-250 Super Duty (04-05) R, E-350 (2003) R, E-350 Club Wagon (03-05) R, E-350 Econoline (99-02) R, E-350 Econoline Club Wagon (01-02) R, E-350 Super Duty (04-07) R, F-150 (02-03) R, F-150 Heritage (2004) R
1AMVF20802	Disc Brake Pad	A	1,529,027	Ford: E-250 (03-07) R, E-250 Econoline (01-02) R, E-250 Super Duty (04-05) R, E-350 (2003) R, E-350 Club Wagon (03-05) R, E-350 Econoline (99-02) R, E-350 Econoline Club Wagon (01-02) R, E-350 Super Duty (04-07) R, F-150 (02-03) R, F-150 Heritage (2004) R
1AMV300929	Disc Brake Pad	D	1,526,208	Saab: 9-2X (05-06) F; Subaru: Baja (03-06) F, Forester (03-10) F, Impreza (02-10) F, Legacy (03-12) F, Outback (02-12) F
1AMVS00631	Drum Brake Shoe	D	1,524,575	Infiniti: QX4 (97-03) R; Nissan: D21 (90-94) R, Frontier (98-04) R, Pathfinder (96-04) R, Pickup (95-97) R, Xterra (00-04) R
1AMV100752	Disc Brake Pad	B	1,512,913	Chevrolet: Classic (04-05) F, Malibu (00-03) F; Oldsmobile: Alero (99-04) F; Pontiac: Grand Am (00-05) F
1AMVS00846	Drum Brake Shoe	C	1,497,114	Lexus: GS300 (93-05) R, IS300 (01-05) R, RX330 (04-06) R, RX350 (07-08) R; Toyota: RAV4 (04-05) R, Sienna (04-10) R
1AMV100653	Disc Brake Pad	A	1,481,102	Infiniti: G20 (99-00) F, I30 (96-01) F; Nissan: Altima (93-01) F, Maxima (89-99) F, Sentra (00-06) F
1AMVS00720	Drum Brake Shoe	D	1,465,619	Chevrolet: Classic (04-05) F, Malibu (97-03) R; Oldsmobile: Cutlass (97-99) R; Pontiac: Grand Am (99-04) R
1AMVS00551	Drum Brake Shoe	A	1,459,495	Chevrolet: Nova (85-88) R, Prizm (98-02) R; Geo: Prizm (89-97) R; Toyota: Corolla (84-02) R, Tercel (83-88) R
1AMV10273Y	Disc Brake Pad	A	1,457,493	Honda: Civic (88-00) F, Civic del Sol (93-97) F, CRX (88-91) F
1AMV300908	Disc Brake Pad	C	1,457,137	Lexus: GS300 (2006) F; Toyota: Camry (02-06) F
1AMV100969	Disc Brake Pad	D	1,455,218	Nissan: Altima (05-06) F, Maxima (04-08) F, Murano (03-12) F
1AMV30389X	Disc Brake Pad	B	1,451,818	Mazda: 929 (88-91) F; Mitsubishi: Starion (85-89) F; Toyota: Cressida (89-92) F, Pickup (89-95) F, Tacoma (95-04) F
1AMV100389	Disc Brake Pad	B	1,451,818	Mazda: 929 (88-91) F; Mitsubishi: Starion (85-89) F; Toyota: Cressida (89-92) F, Pickup (89-95) F, Tacoma (95-04) F
1AMV401445	Disc Brake Pad	D	1,445,904	Hyundai: Azera (12-14) R, Sonata (11-15) R; Kia: Optima (11-14) R
1AMV301258	Disc Brake Pad	C	1,440,279	Ford: Edge (07-14) F; Lincoln: MKX (07-15) F; Mazda: CX-7 (07-11) F, CX-9 (07-14) F
1AMV300882	Disc Brake Pad	C	1,439,072	Buick: Rainier (04-05) F; Chevrolet: SSR (04-05) F, Trailblazer (02-05) F, Trailblazer EXT (02-05) F; GMC: Envoy (02-05) F, Envoy XL (02-05) F, Envoy XUV (04-05) F; Isuzu: Ascender (03-06) F; Oldsmobile: Bravada (02-04) F; Saab: 9-7x (2005) F
1AMV100655	Disc Brake Pad	A	1,438,888	Ford: E-250 (03-07) F, E-250 Econoline (95-02) F, E-250 Super Duty (04-05) F, E-350 (2003) F, E-350 Club Wagon (03-05) F, E-350 Econoline (95-02) F, E-350 Econoline Club Wagon (95-02) F, E-350 Super Duty (04-07) F, E-450 Econoline Super Duty (00-02) F, E-450 Econoline Super Duty Stripped (00-02) F, E-450 Super Duty (03-07) F, E-450 Super Duty Stripped Chassis (2003) F, F-250 (95-99) F, F-350 (95-97) F
1AMV301444	Disc Brake Pad	B	1,420,683	Hyundai: Sonata (11-15) F; Kia: Optima (11-14) F
1AMVS00618	Drum Brake Shoe	C	1,410,580	Ford: Taurus (93-00) R, Thunderbird (89-97) R; Mercury: Cougar (89-96) R, Sable (93-05) R
1AMV301521	Disc Brake Pad	D	1,403,749	Honda: Accord Crosstour (2011) F, CR-V (12-14) F, Crosstour (2012) F, Odyssey (11-15) F
1AMVS00553	Drum Brake Shoe	A	1,402,960	Buick: Skyhawk (82-89) R, Skylark (75-98) R, Somerset (86-87) R, Somerset Regal (1985) R; Cadillac: Cimarron (82-88) R; Chevrolet: Beretta (92-96) R, Cavalier (82-02) R, Chevette (80-87) R, Citation (80-83) R, Citation II (84-85) R, Corsica (87-96) R; Oldsmobile: Achieva (92-98) R, Calais (85-87) R, Cutlass Calais (88-91) R, Firenza (82-88) R, Omega (80-84) R; Pontiac: Grand Am (85-98) R, J2000 (82-83) R, Phoenix (80-84) R, Sunbird (86-94) R, Sunfire (95-02) R, T1000 (81-87) R
1AMV200881	Disc Brake Pad	D	1,402,180	Ford: Explorer (02-05) R, Explorer Sport Trac (03-05) R; Mercury: Mountaineer (02-05) R
1AMVS00801	Drum Brake Shoe	A	1,391,337	Toyota: Corolla (03-08) R
1AMV200865	Disc Brake Pad	D	1,367,707	Acura: MDX (01-06) R; Honda: Odyssey (02-04) R, Pilot (03-08) R
1AMV30906X	Disc Brake Pad	B	1,353,921	Toyota: Tacoma (05-15) F
1AMV31169A	Disc Brake Pad	A	1,350,515	Buick: Enclave (08-12) F; Chevrolet: Traverse (09-13) F; GMC: Acadia (07-14) F; Saturn: Outlook (07-10) F
1AMV401602	Disc Brake Pad	A	1,347,393	Ford: F-150 (12-15) R
1AMV200606	Disc Brake Pad	B	1,331,213	Lexus: GX460 (10-12) R, GX470 (03-09) R, LX450 (96-97) R; Toyota: 4Runner (03-12) R, FJ Cruiser (07-12) R, Land Cruiser (95-97) R, Sequoia (01-07) R
1AMV401391	Disc Brake Pad	B	1,307,176	Lexus: GS350 (13-14) R, GS450h (13-14) R, IS350 (2014) R, RX350 (09-15) R, RX450h (10-14) R; Toyota: Prius V (12-14) R, Sienna (11-15) R
1AMV401468	Disc Brake Pad	B	1,304,335	Buick: Encore (13-14) R, Verano (12-14) R; Chevrolet: Cruze (11-14) R, Orlando (2012) R, Sonic (2013) R, Volt (11-14) R
1AMVS00782	Drum Brake Shoe	B	1,302,153	Acura: CL (01-03) R, RL (96-04) R, TL (99-08) R; Honda: CR-V (02-04) R, Element (03-11) R; Isuzu: Oasis (96-99) R
1AMV10562X	Disc Brake Pad	A	1,301,303	Geo: Prizm (93-97) F; Toyota: Camry (92-96) F, Celica (94-97) F, Corolla (93-97) F, RAV4 (96-00) F
1AMV20340Y	Disc Brake Pad	A	1,282,762	Audi: A6 (98-04) R, A6 Quattro (98-01) R; Volkswagen: Beetle (98-10) R, Cabrio (00-02) R, Golf (00-05) R, Jetta (99-05) R
1AMVS00791	Drum Brake Shoe	C	1,281,148	Ford: Explorer (02-08) R; Lincoln: Aviator (03-05) R; Mercury: Mountaineer (02-08) R
1AMV101107	Disc Brake Pad	A	1,273,846	Audi: A3 (06-13) F, TT (08-14) F, TT Quattro (09-15) F; Volkswagen: Beetle (12-14) F, CC (09-15) F, Eos (07-15) F, Golf (06-14) F, GTI (06-14) F, Jetta (05-10) F, Passat (06-10) F, Passat CC (09-10) F, Rabbit (06-09) F
1AMV41108X	Disc Brake Pad	C	1,272,923	Audi: A3 (06-09) R, A4 (05-09) R, A4 Quattro (05-09) R, A6 (06-11) R, A6 Quattro (05-11) R, TT (08-14) R, TT Quattro (08-15) R; Volkswagen: Eos (07-09) R, Golf (06-14) R, GTI (06-10) R, Jetta (05-10) R, Passat (06-09) R, Rabbit (06-09) R, Tiguan (09-11) R
1AMVF10470	Disc Brake Pad	B	1,247,519	Ford: Escape (05-10) F; Mazda: Tribute (05-10) F; Mercury: Mariner (05-11) F
1AMV400595	Disc Brake Pad	C	1,243,338	Infiniti: G20 (91-00) R, I30 (96-00) R; Nissan: Altima (93-01) R, Maxima (91-01) R, Sentra (00-01) R

**Buyer's Guide for National Business Center
All-Makes Magneti Marelli Offered by Mopar
Product: Brakes**



For Reference Only. See Application Guide for Actual Vehicle Application and Selection of Correct Part for Vehicle

Part Number	Part Description	National Popularity Ranking	Vehicles In Operations (VIO) Within National B.C.	Vehicle Applications
1AMV101047	Disc Brake Pad	C	1,240,166	Ford: Escape (05-10) F; Mazda: Tribute (05-10) F; Mercury: Mariner (05-10) F
1AMV10562Y	Disc Brake Pad	A	1,238,657	Toyota: Camry (97-01) F
1AMV201456	Disc Brake Pad	D	1,192,593	Audi: A3 (10-13) R, A3 Quattro (10-13) R; Volkswagen: Beetle (2012) R, Eos (09-15) R, Golf (10-14) R, GTI (11-14) R, Jetta (11-14) R, Passat (12-14) R
1AMV31184A	Disc Brake Pad	C	1,172,696	Lexus: CT200h (11-12) F; Toyota: Prius (10-13) F, Prius C (12-14) F, Yaris (07-15) F
1AMV400999	Disc Brake Pad	D	1,170,300	Buick: Allure (06-09) R, LaCrosse (05-09) R; Chevrolet: Impala (11-13) R; Pontiac: Grand Prix (04-08) R
1AMV100888	Disc Brake Pad	D	1,166,942	Infiniti: EX35 (08-12) F, FX35 (06-12) F, FX45 (06-08) F, G25 (11-12) F, G35 (05-08) F, G37 (09-13) F, M35 (06-10) F, M35h (12-13) F, M37 (11-12) F, M45 (03-10) F, M56 (11-13) F, Q45 (02-06) F, QX50 (14-15) F, QX70 (14-15) F; Nissan: 350Z (06-08) F, 370Z (09-15) F, Murano (11-14) F, Pathfinder (08-12) F
1AMV301094	Disc Brake Pad	A	1,152,657	Nissan: Frontier (05-14) F, Leaf (11-15) F, Pathfinder (05-12) F, Xterra (05-14) F; Suzuki: Equator (09-12) F
1AMVS00919	Drum Brake Shoe	B	1,148,718	Nissan: Cube (09-14) R, Sentra (07-12) R, Versa (07-12) R
1AMV100843	Disc Brake Pad	C	1,143,294	Ford: Escape (01-07) F; Mazda: Tribute (01-06) F; Mercury: Mariner (05-07) F
1AMVS00760	Drum Brake Shoe	D	1,143,294	Ford: Escape (01-07) R; Mazda: Tribute (01-06) R; Mercury: Mariner (05-07) R
1AMV10687A	Disc Brake Pad	C	1,140,207	Audi: TT (01-06) F, TT Quattro (00-06) F; Volkswagen: Beetle (00-10) F, Golf (00-05) F, Jetta (99-05) F
1AMVF20932	Disc Brake Pad	C	1,135,541	Ford: Crown Victoria (03-11) R, Expedition (03-04) R; Lincoln: Town Car (03-08) R; Mercury: Grand Marquis (03-08) R, Marauder (03-04) R
1AMV401284	Disc Brake Pad	C	1,130,616	Hyundai: Entourage (07-08) R, Genesis (09-11) R, Genesis Coupe (10-14) R, Santa Fe (10-14) R; Kia: Borrego (09-11) R, Sedona (07-14) R, Sorento (11-14) R
1AMV10768A	Disc Brake Pad	B	1,128,897	Volkswagen: Beetle (00-10) F, Golf (00-05) F, Jetta (99-05) F
1AMV400823	Disc Brake Pad	C	1,113,988	Pontiac: Vibe (03-06) R; Toyota: Celica (00-05) R, Corolla (05-06) R, Matrix (03-07) R
1AMV101078	Disc Brake Pad	D	1,109,129	Subaru: B9 Tribeca (06-07) F, Forester (14-15) F, Legacy (05-14) F, Outback (10-14) F, Tribeca (08-14) F
1AMVS00581	Drum Brake Shoe	A	1,102,850	Ford: Aerostar (86-97) R, Country Squire (87-89) R, Explorer (91-94) R, F-100 (80-83) R, F-150 (80-83) R, LTD (79-86) R, LTD Crown Victoria (87-91) R, Ranchero (69-74) R, Ranger (83-94) R, Torino (68-75) R; Mazda: B2300 (1994) R, B3000 (1994) R, B4000 (1994) R, Navajo (91-94) R; Mercury: Cougar (68-75) R, Montego (68-75) R
1AMVS00936	Drum Brake Shoe	C	1,102,814	Ford: Escape (08-12) R; Mazda: Tribute (08-11) R; Mercury: Mariner (08-10) R
1AMV100412	Disc Brake Pad	B	1,099,962	Chevrolet: Camaro (88-92) F, Corvette (88-96) F; Ford: Mustang (94-04) F; Pontiac: Firebird (88-92) F
1AMV200886	Disc Brake Pad	A	1,083,214	Ford: Focus (01-07) R
1AMV4792AX	Disc Brake Pad	B	1,068,276	Chevrolet: Silverado 1500 (05-06) R, Silverado 1500 HD (02-03) R; GMC: Sierra 1500 (05-06) R, Sierra 1500 HD (02-03) R
1AMV201053	Disc Brake Pad	C	1,063,867	Cadillac: CTS (04-14) R, STS (06-09) R; Chevrolet: Camaro (10-14) R; Hyundai: Genesis Coupe (10-14) R; Jaguar: S-Type (03-05) R, Super V8 (2005) R, XJR (02-05) R, XKR (00-02) R
1AMV301578	Disc Brake Pad	A	1,049,683	Honda: Civic (12-14) F
1AMV301000	Disc Brake Pad	D	1,029,294	Buick: Allure (05-09) F, LaCrosse (05-09) F, Terraza (05-07) F; Chevrolet: Uplander (05-09) F; Pontiac: Grand Prix (04-08) F, Montana (05-09) F; Saturn: Relay (05-07) F
1AMV201124	Disc Brake Pad	D	1,029,070	Subaru: B9 Tribeca (06-07) R, BRZ (13-14) R, Forester (14-15) R, Legacy (10-14) R, Outback (10-14) R, Tribeca (08-14) R
1AMV300866	Disc Brake Pad	C	1,022,316	Mitsubishi: Eclipse (01-12) F, Galant (01-12) F, Lancer (04-14) F, Outlander (03-14) F, Outlander Sport (11-13) F
1AMV301374	Disc Brake Pad	A	1,019,597	Nissan: Maxima (09-14) F, Rogue (08-13) F
1AMV20340X	Disc Brake Pad	A	1,004,155	Audi: A3 (2010) R, A4 (00-06) R, A4 Quattro (02-06) R, A6 Quattro (00-04) R, A8 Quattro (01-03) R, Allroad Quattro (01-05) R, S4 (00-02) R, S8 (01-03) R, TT (01-06) R, TT Quattro (00-06) R; Peugeot: 405 (89-91) R; Volkswagen: Beetle (13-14) R, Corrado (90-94) R, Golf (87-99) R, Jetta (85-14) R, Passat (90-99) R, Quantum (86-88) R, Scirocco (86-88) R
1AMVS00665	Drum Brake Shoe	A	1,002,936	Ford: Windstar (95-03) R; Mercury: Villager (93-02) R; Nissan: Quest (93-02) R
1AMV300822	Disc Brake Pad	C	1,000,270	Scion: xA (04-06) F, xB (04-06) F; Toyota: Celica (2000) F, Echo (01-05) F, MR2 Spyder (00-04) F, Prius (01-09) F
1AMV401337	Disc Brake Pad	D	994,563	Cadillac: CTS (08-13) R, SRX (10-14) R; Chevrolet: Camaro (10-14) R
1AMVS00569	Drum Brake Shoe	B	979,435	Ford: Aerostar (86-89) R, Bronco II (84-90) R, Fairmont (78-83) R, Granada (81-82) R, Mustang (79-93) R, Pinto (75-80) R, Ranger (83-94) R, Thunderbird (80-88) R; Mazda: B2300 (1994) R, B3000 (1994) R, B4000 (1994) R; Mercury: Bobcat (75-80) R, Capri (79-86) R, Cougar (80-88) R, Zephyr (78-83) R
1AMV41012B	Disc Brake Pad	B	975,340	Ford: F-150 (09-11) R
1AMV301303	Disc Brake Pad	A	971,612	Lexus: LX570 (08-15) F; Toyota: Land Cruiser (08-15) F, Sequoia (08-15) F, Tundra (07-15) F
1AMV401304	Disc Brake Pad	A	971,612	Lexus: LX570 (08-15) R; Toyota: Land Cruiser (08-15) R, Sequoia (08-15) R, Tundra (07-15) R
1AMV200674	Disc Brake Pad	A	970,832	Ford: Crown Victoria (96-02) R; Lincoln: Town Car (96-02) R; Mercury: Grand Marquis (96-02) R
1AMV20674A	Disc Brake Pad	C	970,832	Ford: Crown Victoria (96-02) R; Lincoln: Town Car (96-02) R; Mercury: Grand Marquis (96-02) R
1AMV301378	Disc Brake Pad	A	964,665	Acura: MDX (07-13) F, ZDX (10-13) F; Honda: Pilot (09-15) F
1AMV400828	Disc Brake Pad	C	962,575	Toyota: Avalon (00-05) R, Camry (00-01) R, Solara (00-03) R
1AMV10601X	Disc Brake Pad	A	958,696	Ford: Taurus (94-00) F; Lincoln: Continental (93-94) F; Mercury: Sable (94-00) F
1AMV301522	Disc Brake Pad	B	954,813	Buick: Verano (12-14) F; Cadillac: ATS (13-14) F; Chevrolet: Cruze (13-14) F, Sonic (12-14) F
1AMV100632	Disc Brake Pad	A	951,731	Ford: Bronco (94-96) F, E-150 (2003) F, E-150 Club Wagon (2003) F, E-150 Econoline (94-02) F, E-150 Econoline Club Wagon (94-02) F, F-150 (94-96) F
1AMVS00992	Drum Brake Shoe	D	950,224	Chevrolet: Cruze (11-14) R
1AMV400429	Disc Brake Pad	D	949,559	Hyundai: Elantra (94-06) R, Tiburon (97-08) R; Kia: Spectra (04-09) R; Nissan: Maxima (85-90) R, Stanza (90-92) R
1AMV301508	Disc Brake Pad	A	942,377	Ford: Explorer (11-15) F, Flex (12-14) F, Taurus (12-15) F; Lincoln: MKS (2012) F, MKT (12-14) F
1AMV100956	Disc Brake Pad	D	941,602	Chevrolet: Cobalt (05-10) F; Pontiac: G5 (07-10) F, Pursuit (05-06) F
1AMV301543	Disc Brake Pad	B	915,877	Hyundai: Elantra (11-15) F, Elantra Coupe (13-14) F, Elantra GT (13-14) F, Veloster (12-15) F
1AMV300598	Disc Brake Pad	A	913,973	Ford: Taurus (01-02) F, Thunderbird (96-97) F; Lincoln: Continental (95-02) F, Mark VIII (93-98) F; Mercury: Cougar (96-97) F, Sable (01-05) F
1AMV10333X	Disc Brake Pad	A	913,843	Nissan: D21 (86-94) F, Frontier (98-04) F, Pathfinder (87-95) F, Pickup (95-97) F, Van (87-88) F; Subaru: SVX (92-96) F

**Buyer's Guide for National Business Center
All-Makes Magneti Marelli Offered by Mopar
Product: Brakes**



For Reference Only. See Application Guide for Actual Vehicle Application and Selection of Correct Part for Vehicle

Part Number	Part Description	National Popularity Ranking	Vehicles In Operations (VIO) Within National B.C.	Vehicle Applications
1AMVS00574	Drum Brake Shoe	D	903,355	Nissan: D21 (86-94) R, Frontier (98-04) R, Pathfinder (89-95) R, Pickup (95-97) R, Stanza (1986) R, Van (87-88) R
1AMV401430	Disc Brake Pad	A	903,141	Buick: LaCrosse (10-14) R, Regal (11-14) R; Cadillac: XTS (13-14) R; Chevrolet: Impala (2014) R, Malibu (13-14) R; Saab: 9-5 (2011) R
1AMV400996	Disc Brake Pad	D	877,289	Lexus: RX330 (04-06) R, RX350 (07-08) R, RX400h (06-08) R; Toyota: Highlander (04-07) R
1AMV100768	Disc Brake Pad	B	868,707	Volkswagen: Beetle (98-99) F, Golf (00-03) F, Jetta (99-14) F
1AMV10915B	Disc Brake Pad	D	860,995	Mazda: 3 (07-13) F; Volvo: C70 (06-12) F, S40 (05-12) F, V50 (05-11) F
1AMV201055	Disc Brake Pad	C	855,486	Ford: Escape (05-08) R; Mazda: Tribute (05-08) R; Mercury: Mariner (05-08) R
1AMV10948Y	Disc Brake Pad	B	848,037	Acura: ILX (13-15) F; Honda: Civic (12-13) F
1AMV30476X	Disc Brake Pad	A	847,933	Lexus: ES300 (92-96) F, LS400 (1990) F, SC300 (92-98) F; Toyota: Avalon (95-97) F, Camry (92-96) F, Celica (94-99) F
1AMVS00795	Drum Brake Shoe	C	847,049	Chevrolet: Cavalier (03-05) R, HHR (06-09) R; Pontiac: G5 (07-08) R, Pursuit (05-06) R, Sunfire (03-05) R
1AMV301432	Disc Brake Pad	B	839,913	Hyundai: Azera (12-14) F, Santa Fe (10-14) F; Kia: Sorento (11-14) F
1AMV401377	Disc Brake Pad	B	838,765	Ford: Edge (12-14) R, Explorer (2011) R, Flex (09-14) R, Taurus (13-15) R; Lincoln: MKS (09-12) R, MKT (10-14) R
1AMV10476Y	Disc Brake Pad	A	830,365	Toyota: Camry (00-01) F, Sienna (98-03) F
1AMV401088	Disc Brake Pad	A	829,023	Honda: Odyssey (05-10) R
1AMV400835	Disc Brake Pad	D	825,049	Lexus: ES300 (00-01) R; Scion: tC (05-10) R; Toyota: Camry (00-01) R
1AMV301397	Disc Brake Pad	C	821,803	Hyundai: Elantra (09-12) F; Kia: Forte (10-13) F, Forte Koup (10-13) F, Forte5 (12-13) F, Soul (2014) F
1AMV100864	Disc Brake Pad	D	816,384	Hyundai: Santa Fe (01-06) F, XG300 (2001) F, XG350 (02-03) F; Kia: Sedona (02-05) F, Sorento (03-09) F
1AMV301470	Disc Brake Pad	D	815,803	Chevrolet: Cruze (11-14) F, Orlando (2012) F, Volt (11-14) F
1AMV401259	Disc Brake Pad	D	810,748	Ford: Edge (07-10) R; Lincoln: MKX (07-10) R; Mazda: CX-7 (07-11) R, CX-9 (07-14) R
1AMV40383X	Disc Brake Pad	A	809,119	Mitsubishi: Eclipse (95-12) R, Galant (94-12) R, Sigma (89-90) R
1AMV400995	Disc Brake Pad	D	806,755	Toyota: Sienna (04-10) R
1AMV100931	Disc Brake Pad	B	803,519	Ford: Crown Victoria (03-11) F; Lincoln: Town Car (03-11) F; Mercury: Grand Marquis (03-08) F, Marauder (03-04) F
1AMVF10931	Disc Brake Pad	B	803,519	Ford: Crown Victoria (03-11) F; Lincoln: Town Car (03-11) F; Mercury: Grand Marquis (03-08) F, Marauder (03-04) F
1AMV10598X	Disc Brake Pad	A	802,484	Ford: Taurus (03-07) F
1AMV300507	Disc Brake Pad	A	796,266	Saturn: SC (91-92) F, SC1 (93-02) F, SC2 (93-02) F, SL (91-02) F, SL1 (91-02) F, SL2 (91-02) F, SW1 (93-99) F, SW2 (93-01) F
1AMVS00637	Drum Brake Shoe	D	796,266	Saturn: SC (91-92) R, SC1 (93-02) R, SC2 (93-02) R, SL (91-02) R, SL1 (91-02) R, SL2 (91-02) R, SW1 (93-99) R, SW2 (93-01) R
1AMV401100	Disc Brake Pad	A	788,209	Nissan: Frontier (05-14) R, Xterra (05-14) R; Suzuki: Equator (09-12) R
1AMVS00780	Drum Brake Shoe	D	787,924	Chevrolet: Equinox (05-06) R; Pontiac: Aztek (01-05) R, Torrent (2006) R; Saturn: Vue (02-07) R
1AMV100741	Disc Brake Pad	A	786,780	Chevrolet: Prizm (98-02) F; Toyota: Corolla (98-02) F
1AMV200961	Disc Brake Pad	D	786,438	Infiniti: G35 (03-04) R; Mitsubishi: Lancer (03-06) R; Nissan: 350Z (03-08) R; Subaru: Impreza (04-14) R
1AMV200683	Disc Brake Pad	D	773,708	BMW: 330Ci (01-05) R, 330i (01-05) R, 330xi (01-05) R, 525i (04-10) R, 525xi (06-07) R, 528i (08-10) R, 528xi (2008) R, 530i (04-07) R, 530xi (06-07) R, 535i xDrive (09-10) R, 535xi (2008) R, 740i (94-01) R, 740iL (94-01) R, 750iL (95-01) R, M3 (03-06) R, M5 (2003) R, X3 (04-10) R, X5 (00-06) R, Z4 (2008) R, Z8 (01-03) R; Land Rover: Range Rover (03-05) R
1AMV200932	Disc Brake Pad	C	771,175	Ford: Crown Victoria (03-11) R; Lincoln: Town Car (03-08) R; Mercury: Grand Marquis (03-08) R, Marauder (03-04) R
1AMVF21411	Disc Brake Pad	C	768,011	Chevrolet: Express 3500 (09-15) R, Express 4500 (09-14) R, Silverado 2500 HD (11-15) F, Silverado 3500 (11-13) F, Silverado 3500 HD (11-15) F; GMC: Savana 3500 (09-14) R, Savana 4500 (09-14) R, Sierra 2500 HD (11-15) F, Sierra 3500 HD (11-15) F
1AMVS00809	Drum Brake Shoe	A	763,996	Ford: Crown Victoria (03-11) R; Lincoln: Town Car (03-08) R; Mercury: Grand Marquis (03-08) R
1AMV301169	Disc Brake Pad	A	743,373	Buick: Rainier (06-07) F; Chevrolet: Colorado (09-12) F, SSR (2006) F, Trailblazer (06-09) F, Trailblazer EXT (2006) F; GMC: Canyon (09-12) F, Envoy (06-09) F, Envoy XL (2006) F; Isuzu: Ascender (07-08) F
1AMV100844	Disc Brake Pad	C	740,440	Buick: Rendezvous (02-07) F; Chevrolet: Venture (02-04) F; Oldsmobile: Silhouette (02-04) F; Pontiac: Aztek (01-05) F, Montana (02-05) F
1AMVS00676	Drum Brake Shoe	D	736,939	Subaru: Forester (98-08) R, Impreza (93-03) R, Legacy (95-99) R
1AMV301005	Disc Brake Pad	D	726,876	Lexus: RX330 (04-06) F, RX350 (07-09) F, RX400h (06-08) F; Toyota: Highlander (06-07) F
1AMV201336	Disc Brake Pad	A	726,250	Acura: TSX (09-10) R; Honda: Accord (08-09) R
1AMV400900	Disc Brake Pad	B	721,218	Infiniti: G20 (00-02) R, I30 (00-01) R, I35 (02-04) R; Mazda: RX-8 (04-09) R; Nissan: Maxima (02-03) R, Sentra (02-06) R
1AMV100793	Disc Brake Pad	B	719,089	Acura: MDX (01-02) F; Honda: Odyssey (99-04) F
1AMV100473	Disc Brake Pad	A	716,128	Ford: Escort (91-03) F; Mazda: MX-3 (92-95) F, Protege (90-98) F; Mercury: Tracer (91-99) F
1AMV100748	Disc Brake Pad	A	716,108	Ford: Crown Victoria (98-02) F; Lincoln: Town Car (98-02) F; Mercury: Grand Marquis (98-02) F
1AMVF10748	Disc Brake Pad	A	716,108	Ford: Crown Victoria (98-02) F; Lincoln: Town Car (98-02) F; Mercury: Grand Marquis (98-02) F
1AMVS00773	Drum Brake Shoe	B	714,129	Hyundai: Santa Fe (01-06) R, Tucson (05-09) R; Kia: Sportage (05-10) R
1AMV100816	Disc Brake Pad	A	712,912	Ford: Focus (00-04) F
1AMV401157	Disc Brake Pad	D	710,825	Hyundai: Accent (06-08) R, Elantra (2009) R, Tucson (10-15) R; Kia: Forte (10-12) R, Rio (06-11) R, Sportage (11-12) R
1AMV300799	Disc Brake Pad	B	709,833	Toyota: Tacoma (99-04) F
1AMV300913	Disc Brake Pad	C	701,148	Chevrolet: Equinox (05-06) F; Pontiac: Torrent (2006) F; Saturn: Vue (02-07) F
1AMV200974	Disc Brake Pad	D	697,938	Chevrolet: Express 2500 (03-14) R, Express 3500 (03-14) R, Express 4500 (09-14) R; GMC: Savana 2500 (03-14) R, Savana 3500 (03-14) R, Savana 4500 (09-14) R
1AMV400770	Disc Brake Pad	C	695,876	Subaru: Baja (03-06) R, Forester (98-03) R, Impreza (00-02) R, Legacy (00-09) R, Outback (00-04) R
1AMV101333	Disc Brake Pad	A	693,875	Ford: F-250 Super Duty (08-11) F, F-350 Super Duty (08-12) F
1AMV100558	Disc Brake Pad	B	693,529	BMW: 318i (91-98) F, 318is (92-98) F, 318ti (95-99) F, 320i (01-05) F, 323Ci (2000) F, 323i (97-01) F, 323is (98-99) F, 325Ci (01-06) F, 325i (92-05) F, 325is (92-95) F, 325xi (01-05) F, 328Ci (2000) F, 328i (96-00) F, 328is (96-99) F, Z3 (96-02) F, Z4 (03-08) F

**Buyer's Guide for National Business Center
All-Makes Magneti Marelli Offered by Mopar**

Product: Brakes

For Reference Only. See Application Guide for Actual Vehicle Application and Selection of Correct Part for Vehicle



Part Number	Part Description	National Popularity Ranking	Vehicles In Operations (VIO) Within National B.C.	Vehicle Applications
1AMV200986	Disc Brake Pad	B	681,905	Mercedes-Benz: CL500 (03-06) R, CL550 (07-14) R, CL600 (07-14) R, CLS500 (2006) R, CLS550 (07-12) R, E320 (03-09) R, E350 (06-12) R, E500 (03-05) R, E550 (07-14) R, S350 (2006) R, S400 (10-12) R, S430 (03-06) R, S500 (03-06) R, S550 (07-12) R, S600 (07-13) R, SL500 (03-06) R, SL550 (07-12) R
1AMV30914X	Disc Brake Pad	D	680,063	Honda: Pilot (03-08) F
1AMV200664	Disc Brake Pad	B	671,955	Ford: Windstar (95-03) R
1AMV300921	Disc Brake Pad	C	666,431	Cadillac: CTS (03-07) F, STS (05-08) F; Pontiac: Grand Prix (05-08) F
1AMV401041	Disc Brake Pad	D	664,069	Infiniti: QX56 (04-10) R; Nissan: Armada (05-14) R, Titan (04-14) R
1AMV401415	Disc Brake Pad	B	659,676	Infiniti: JX35 (2013) R, QX60 (14-15) R; Nissan: Murano (09-14) R, Pathfinder (13-14) R, Quest (11-14) R; Suzuki: Grand Vitara (09-13) R
1AMV401325	Disc Brake Pad	A	659,264	Toyota: Highlander (08-13) R
1AMV101367	Disc Brake Pad	B	657,540	Chevrolet: Tahoe (08-14) F; GMC: Yukon (08-14) F
1AMV100884	Disc Brake Pad	D	654,727	Toyota: Highlander (01-07) F
1AMV100804	Disc Brake Pad	A	654,274	Ford: Mustang (99-04) F
1AMV100840	Disc Brake Pad	D	641,596	Audi: A4 (96-06) F, A4 Quattro (96-06) F, A6 (98-04) F, A6 Quattro (98-01) F; Volkswagen: Passat (00-05) F
1AMVS00860	Drum Brake Shoe	D	639,985	Chevrolet: Cobalt (05-08) R
1AMV200876	Disc Brake Pad	C	639,984	Mercedes-Benz: C230 (02-07) R, C240 (01-05) R, C280 (06-07) R, C320 (01-05) R, C350 (06-07) R, CLK320 (00-05) R, CLK350 (06-09) R, CLK430 (00-03) R, E300 (98-99) R, E320 (96-02) R, E420 (1997) R, E430 (1997) R, SLK280 (06-08) R, SLK350 (05-11) R
1AMV401313	Disc Brake Pad	D	627,872	Hyundai: Azera (10-11) R, Sonata (09-10) R; Kia: Amanti (07-09) R, Soul (10-13) R
1AMVS00715	Drum Brake Shoe	C	626,297	Hyundai: Accent (03-05) R, Elantra (97-06) R, Tiburon (97-01) R
1AMV101125	Disc Brake Pad	A	620,437	Hyundai: Azera (06-11) F, Sonata (06-10) F; Kia: Amanti (07-09) F
1AMV201341	Disc Brake Pad	A	618,839	Mercedes-Benz: C250 (12-15) R, C300 (08-14) R, C350 (08-15) R, E350 (13-14) R, E550 (10-14) R
1AMV401071	Disc Brake Pad	D	614,523	Ford: Five Hundred (05-07) R, Freestyle (05-07) R, Taurus (08-09) R, Taurus X (08-09) R; Jaguar: X-Type (05-08) R; Mercury: Montego (05-07) R, Sable (08-09) R
1AMV300787	Disc Brake Pad	D	612,072	Honda: Accord (05-06) F
1AMV101070	Disc Brake Pad	D	596,348	Ford: Five Hundred (05-07) F, Freestyle (05-07) F, Taurus (08-09) F, Taurus X (08-09) F; Mercury: Montego (05-07) F, Sable (08-09) F
1AMV201071	Disc Brake Pad	D	596,348	Ford: Five Hundred (05-07) R, Freestyle (05-07) R, Taurus (08-09) R, Taurus X (08-09) R; Mercury: Montego (05-07) R, Sable (08-09) R
1AMVS00917	Drum Brake Shoe	D	591,370	Toyota: Prius (09-14) R, Yaris (07-15) R
1AMV401281	Disc Brake Pad	D	590,841	Acura: MDX (07-13) R, ZDX (10-13) R; Honda: Pilot (09-11) R
1AMV301506	Disc Brake Pad	D	585,556	Acura: TSX (12-14) F; Honda: Accord (11-12) F
1AMV301081	Disc Brake Pad	C	579,139	Ford: Mustang (05-10) F
1AMV401082	Disc Brake Pad	A	579,139	Ford: Mustang (05-10) R
1AMV101069	Disc Brake Pad	C	578,333	Ford: F-250 Super Duty (05-07) F, F-350 Super Duty (05-07) F, F-450 Super Duty (11-12) F, F-550 Super Duty (11-12) F
1AMV201068	Disc Brake Pad	A	578,333	Ford: F-250 Super Duty (05-07) R, F-350 Super Duty (05-07) R
1AMV200954	Disc Brake Pad	D	578,312	Hyundai: Entourage (2007) R, Santa Fe (07-09) R; Kia: Sedona (2006) R, Sorento (03-09) R
1AMV101039	Disc Brake Pad	D	574,263	Chevrolet: Colorado (04-08) F; GMC: Canyon (04-08) F; Isuzu: i-280 (2006) F, i-290 (2007) F, i-350 (2006) F, i-370 (2007) F; Pontiac: G6 (2005) F
1AMV301039	Disc Brake Pad	D	574,263	Chevrolet: Colorado (04-08) F; GMC: Canyon (04-08) F; Isuzu: i-280 (2006) F, i-290 (2007) F, i-350 (2006) F, i-370 (2007) F; Pontiac: G6 (2005) F
1AMVS00794	Drum Brake Shoe	C	573,750	Subaru: Forester (98-08) R, Impreza (95-07) R
1AMV300721	Disc Brake Pad	B	572,155	Subaru: Forester (98-02) F, Impreza (98-02) F, Legacy (97-02) F, Outback (00-01) F
1AMVS00764	Drum Brake Shoe	C	571,432	Toyota: 4Runner (01-02) R, Tundra (03-06) R
1AMVS00802	Drum Brake Shoe	A	567,433	Toyota: Camry (05-06) R, RAV4 (2003) R
1AMVS00658	Drum Brake Shoe	D	561,412	Eagle: Summit (92-96) R; Mitsubishi: Eclipse (95-05) R, Expo (92-95) R, Galant (94-03) R
1AMV101328	Disc Brake Pad	A	559,800	Ford: E-150 (08-14) F, E-250 (08-14) F, E-350 Super Duty (08-14) F, E-450 Super Duty (08-14) F
1AMV201329	Disc Brake Pad	A	559,800	Ford: E-150 (08-14) R, E-250 (08-14) R, E-350 Super Duty (08-14) R
1AMVF11328	Disc Brake Pad	A	559,800	Ford: E-150 (08-14) F, E-250 (08-14) F, E-350 Super Duty (08-14) F, E-450 Super Duty (08-14) F
1AMVF21329	Disc Brake Pad	A	559,800	Ford: E-150 (08-14) R, E-250 (08-14) R, E-350 Super Duty (08-14) R
1AMV201018	Disc Brake Pad	B	553,586	Audi: A4 (09-15) R, A4 Quattro (09-15) R, A5 (08-14) R, A5 Quattro (08-14) R, A6 Quattro (05-11) R, A8 Quattro (04-10) R, Q5 (09-15) R, RS4 (07-08) R, RS6 (03-04) R, S4 (04-15) R, S5 (08-15) R, S6 (07-11) R, S8 (07-10) R; Volkswagen: Phaeton (04-06) R
1AMV301158	Disc Brake Pad	A	552,927	Ford: Explorer (06-10) F, Explorer Sport Trac (07-10) F; Mercury: Mountaineer (06-10) F
1AMV201171	Disc Brake Pad	B	548,678	BMW: 120i (07-12) R, 125i (09-13) R, 128i (08-13) R, 323i (06-11) R, 325i (2006) R, 325xi (2006) R, 328i (07-13) R, 328xi (07-08) R, X1 (10-14) R
1AMVF10459	Disc Brake Pad	A	547,668	Chevrolet: C3500 (92-00) F, Express 2500 (01-02) F, Express 3500 (96-02) F, G30 (1996) F, K3500 (90-99) F; GMC: C3500 (92-00) F, K3500 (90-00) F, Savana 2500 (01-02) F, Savana 3500 (96-02) F
1AMV101342	Disc Brake Pad	C	545,952	Mercedes-Benz: C250 (12-15) F, C300 (13-14) F, C350 (08-15) F, E250 (11-14) F, E350 (10-14) F, E400 (13-14) F, E550 (10-11) F, SLK350 (12-14) F
1AMV301339	Disc Brake Pad	A	541,869	Ford: Focus (08-11) F
1AMV200763	Disc Brake Pad	D	541,456	BMW: 318i (94-98) R, 318is (94-98) R, 318ti (95-99) R, 320i (01-05) R, 323Ci (2000) R, 323i (97-01) R, 325Ci (04-06) R, 325i (01-05) R, 325xi (04-05) R, 328Ci (2000) R, 328i (96-00) R, 328is (96-99) R, Z4 (03-08) R; Saab: 9-5 (99-08) R
1AMV200795	Disc Brake Pad	D	530,244	Volvo: S60 (01-09) R, S70 (99-00) R, S80 (99-06) R, V70 (99-07) R, XC70 (03-07) R
1AMV201109	Disc Brake Pad	A	526,873	Ford: Explorer (06-10) R, Explorer Sport Trac (07-08) R; Mercury: Mountaineer (06-08) R
1AMV101379	Disc Brake Pad	C	525,247	Chevrolet: Cobalt (08-10) F, HHR (09-10) F
1AMVS00785	Drum Brake Shoe	C	525,148	Pontiac: Vibe (03-08) R; Toyota: Matrix (03-08) R

**Buyer's Guide for National Business Center
All-Makes Magneti Marelli Offered by Mopar
Product: Brakes**



For Reference Only. See Application Guide for Actual Vehicle Application and Selection of Correct Part for Vehicle

Part Number	Part Description	National Popularity Ranking	Vehicles In Operations (VIO) Within National B.C.	Vehicle Applications
1AMVS00815	Drum Brake Shoe	C	521,265	Chevrolet: Colorado (04-08) R; GMC: Canyon (04-08) R; Isuzu: i-280 (2006) R, i-290 (2007) R, i-350 (2006) R, i-370 (2007) R
1AMV100803	Disc Brake Pad	A	514,520	Ford: Windstar (99-03) F
1AMVS00598	Drum Brake Shoe	A	511,845	Ford: Escort (91-03) R, Probe (89-92) R; Mazda: 323 (90-91) R, 626 (88-92) R, MX-6 (88-92) R, Protege (90-91) R; Mercury: Tracer (91-99) R
1AMV401172	Disc Brake Pad	C	493,110	Buick: Lucerne (06-11) R; Cadillac: DTS (06-11) R
1AMV100818	Disc Brake Pad	B	492,911	Buick: Park Avenue (97-05) F, Regal (97-04) F
1AMV101019	Disc Brake Pad	D	490,174	Cadillac: CTS (03-07) F, SRX (04-09) F, STS (05-08) F; Pontiac: Bonneville (04-05) F
1AMV21334A	Disc Brake Pad	A	481,741	Ford: F-250 Super Duty (11-13) R, F-350 Super Duty (11-12) R, F-450 Super Duty (11-12) R, F-550 Super Duty (11-12) R, F53 (2011) R
1AMV101375	Disc Brake Pad	C	479,228	Audi: A3 Quattro (2015) F, Q3 (13-15) F; Volkswagen: Passat (12-15) F, Tiguan (09-15) F
1AMV100637	Disc Brake Pad	A	471,762	Ford: Probe (93-97) F; Mazda: 626 (93-02) F, MX-6 (93-97) F, Protege (99-03) F, Protege5 (02-03) F
1AMV100847	Disc Brake Pad	C	464,133	Mercedes-Benz: C230 (2004) F, CL500 (00-06) F, CL55 AMG (01-02) F, CL600 (01-06) F, CLK500 (03-05) F, CLK55 AMG (03-04) F, CLS500 (2006) F, CLS550 (07-11) F, E350 (06-09) F, ML430 (00-01) F, ML500 (02-05) F, ML55 AMG (00-03) F, S350 (2006) F, S430 (00-06) F, S500 (00-06) F, S55 AMG (2002) F, S600 (01-12) F, SL500 (99-06) F, SL550 (07-12) F, SL600 (99-02) F, SLK350 (05-06) F
1AMV400797	Disc Brake Pad	D	460,920	Chevrolet: Aveo (04-13) F; Daewoo: Lanos (00-02) F, Leganza (99-02) F, Nubira (99-02) F; Pontiac: Wave (05-07) F; Suzuki: Forenza (04-08) F, Reno (05-08) F
1AMV100794	Disc Brake Pad	D	452,692	Volvo: S60 (01-09) F, S80 (99-06) F, V70 (01-07) F, XC70 (03-07) F
1AMV201279	Disc Brake Pad	B	443,623	Ford: Expedition (07-15) R; Lincoln: Navigator (07-15) R
1AMV101204	Disc Brake Pad	B	442,857	Mini: Cooper (06-15) F, Cooper Countryman (11-15) F, Cooper Paceman (13-15) F
1AMV100918	Disc Brake Pad	B	439,968	BMW: 323i (07-10) F, 525i (2006) F, 525xi (06-07) F, 528i (08-10) F, 528i xDrive (09-10) F, 528xi (2008) F, 530i (04-07) F, 530xi (06-07) F, 535i (08-10) F, 535i xDrive (09-10) F, 535xi (2008) F, 545i (04-05) F, 550i (06-09) F, 645Ci (04-05) F, 650i (06-10) F, 745i (02-05) F, 745Li (02-05) F, 750i (06-08) F, 750Li (06-08) F, 760i (04-06) F, 760Li (03-08) F, M3 (08-13) F, X1 (13-14) F
1AMV301264	Disc Brake Pad	A	439,920	Chevrolet: Equinox (07-09) F; Pontiac: Torrent (07-09) F; Saturn: Vue (08-09) F; Suzuki: XL-7 (07-09) F
1AMV100934	Disc Brake Pad	C	439,281	Ford: Expedition (03-04) F; Lincoln: Navigator (03-04) F
1AMV200935	Disc Brake Pad	C	439,281	Ford: Expedition (03-04) R; Lincoln: Navigator (03-04) R
1AMV300617	Disc Brake Pad	B	438,397	Acura: Integra (94-01) F; Honda: Civic (93-95) F, Civic del Sol (96-97) F
1AMV100812	Disc Brake Pad	A	437,351	Lexus: LX470 (98-07) F; Toyota: Land Cruiser (98-07) F, Sequoia (01-03) F, Tundra (00-02) F
1AMV300812	Disc Brake Pad	A	437,351	Lexus: LX470 (98-07) F; Toyota: Land Cruiser (98-07) F, Sequoia (01-03) F, Tundra (00-02) F
1AMV101322	Disc Brake Pad	B	436,758	Audi: A4 (09-15) F, A4 allroad (13-14) F, A4 Quattro (09-15) F, A5 (08-14) F, A5 Quattro (08-14) F, A6 (12-15) F, A6 Quattro (13-15) F, allroad (13-15) F, Q5 (13-15) F, S4 (12-15) F, S5 (08-15) F
1AMV101340	Disc Brake Pad	B	433,287	Mercedes-Benz: C250 (12-15) F, C300 (08-14) F, SLK250 (12-14) F
1AMV10918A	Disc Brake Pad	C	430,035	BMW: 328i (08-13) F, 328i xDrive (09-13) F, 328xi (2008) F, 335i (2013) F, X1 (2012) F
1AMVF1047B	Disc Brake Pad	C	426,412	Ford: Escape (11-12) F; Mazda: Tribute (2011) F
1AMV400580	Disc Brake Pad	A	424,019	Acura: SLX (96-99) R; Honda: Passport (94-02) R; Isuzu: Amigo (94-00) R, Axiom (02-04) R, Rodeo (94-04) R, Rodeo Sport (01-03) R, Trooper (92-02) R, VehiCROSS (99-01) R
1AMV31047B	Disc Brake Pad	C	423,319	Ford: Escape (11-12) F
1AMV200919	Disc Brake Pad	A	422,731	BMW: 335i GT xDrive (2014) R, 535i (08-10) R, 535i GT (13-14) R, 535i GT xDrive (13-14) R, 545i (04-05) R, 550i (06-10) R, 550i GT (10-14) R, 550i GT xDrive (11-14) R, 645Ci (04-05) R, 650i (06-10) R, 745i (02-05) R, 745Li (02-05) R, 750i (06-08) R, 750Li (06-08) R, 760i (04-06) R, 760Li (03-08) R, M3 (08-13) R, M5 (06-10) R, M6 (06-11) R, X5 (07-13) R, X6 (2009) R
1AMVS00790	Drum Brake Shoe	A	420,262	Pontiac: Vibe (03-06) R; Toyota: Matrix (03-06) R
1AMV201334	Disc Brake Pad	A	419,970	Ford: F-250 Super Duty (08-10) R, F-350 Super Duty (08-10) R
1AMV301509	Disc Brake Pad	D	417,488	Infiniti: QX56 (06-13) F, QX80 (14-15) F; Nissan: Armada (06-14) F, Titan (08-14) F
1AMVS00779	Drum Brake Shoe	D	416,507	Nissan: Sentra (02-06) R
1AMV100800	Disc Brake Pad	B	414,350	Saab: 9-3 (99-03) F, 9-5 (99-06) F, 900 (97-98) F; Saturn: L100 (01-02) F, L200 (01-03) F, L300 (01-05) F, LS (2000) F, LS1 (2000) F, LS2 (2000) F, LW1 (2000) F, LW2 (2000) F, LW200 (01-03) F, LW300 (01-03) F
1AMV101123	Disc Brake Pad	A	411,904	Mercedes-Benz: E350 (07-09) F, E550 (07-09) F, GL320 (07-09) F, GL350 (10-12) F, GL450 (07-12) F, GL550 (08-12) F, ML320 (07-09) F, ML350 (06-11) F, ML500 (06-07) F, ML550 (08-11) F, R320 (07-09) F, R350 (06-11) F, R500 (06-07) F
1AMV401347	Disc Brake Pad	D	411,641	Infiniti: FX50 (09-13) R, G37 (08-13) R, M37 (11-13) R, M56 (11-13) R, Q50 (2014) R, Q60 (2014) R, Q70 (14-15) R; Nissan: 370Z (09-15) R
1AMV401103	Disc Brake Pad	D	406,917	Acura: TL (09-14) R; Honda: Ridgeline (06-14) R
1AMV300731	Disc Brake Pad	C	406,567	Cadillac: XLR (04-09) F; Chevrolet: Corvette (97-13) F; Pontiac: GTO (05-06) F
1AMV20031X	Disc Brake Pad	A	399,944	Volvo: 164 (1975) R, 240 (90-93) R, 242 (75-84) R, 244 (75-89) R, 245 (75-89) R, 262 (76-81) R, 264 (76-82) R, 265 (76-81) R, 740 (85-92) R, 745 (1985) R, 760 (83-90) R, 780 (1987) R, 850 (93-97) R, 940 (91-95) R, 960 (92-97) R, C70 (98-04) R, S70 (98-00) R, V70 (98-00) R
1AMV200868	Disc Brake Pad	D	394,053	Mitsubishi: Endeavor (04-11) R, Lancer (08-14) R, Montero (01-06) R, Outlander (07-12) R, Outlander Sport (11-12) R
1AMV400732	Disc Brake Pad	D	386,515	Cadillac: XLR (04-09) R; Chevrolet: Corvette (97-13) R
1AMV300496	Disc Brake Pad	C	384,694	Honda: Accord (90-93) F
1AMV301287	Disc Brake Pad	D	383,012	Infiniti: G35 (07-08) F, G37 (08-13) F, Q60 (2014) F
1AMV400909	Disc Brake Pad	D	382,710	Chevrolet: Silverado 3500 (01-09) R, Silverado 3500 HD (07-10) R; GMC: Sierra 3500 (01-07) R, Sierra 3500 HD (07-10) R
1AMV301346	Disc Brake Pad	D	381,929	Infiniti: FX50 (09-13) F, G37 (08-13) F, Q50 (2014) F, Q60 (2014) F, Q70 (14-15) F, QX70 (14-15) F; Nissan: 370Z (09-15) F
1AMVS00924	Drum Brake Shoe	D	380,573	Mitsubishi: Lancer (08-14) R; Nissan: Versa (09-11) R

**Buyer's Guide for National Business Center
All-Makes Magneti Marelli Offered by Mopar
Product: Brakes**



For Reference Only. See Application Guide for Actual Vehicle Application and Selection of Correct Part for Vehicle

Part Number	Part Description	National Popularity Ranking	Vehicles In Operations (VIO) Within National B.C.	Vehicle Applications
1AMV500800	Drum Brake Shoe	C	378,138	Chevrolet: Cobalt (09-10) R, HHR (10-11) R; Pontiac: G5 (09-10) R
1AMV401585	Disc Brake Pad	C	373,823	Honda: Pilot (12-15) R
1AMV300817	Disc Brake Pad	D	373,173	Scion: tC (05-10) F; Toyota: Celica (00-05) F
1AMV200692	Disc Brake Pad	D	372,672	BMW: 323is (98-99) R, 325Ci (01-03) R, 325xi (01-03) R, 525i (01-03) R, 528i (97-00) R, 530i (01-03) R, 540i (97-03) R, M5 (2002) R, Z3 (96-02) R
1AMV201691	Disc Brake Pad	N	366,921	Ford: F-250 Super Duty (13-15) R, F-350 Super Duty (13-15) R, F-450 Super Duty (13-15) R
1AMVF11404	Disc Brake Pad	B	366,886	Chevrolet: Camaro (10-13) F, Caprice (11-14) F; Saab: 9-5 (2011) F
1AMV101474	Disc Brake Pad	D	366,853	Chevrolet: Camaro (11-14) F, Corvette (2014) F, SS (2014) F
1AMV300579	Disc Brake Pad	A	366,121	Acura: SLX (96-99) F; Honda: Passport (94-01) F; Isuzu: Amigo (94-00) F, Axiom (2002) F, Rodeo (94-01) F, Rodeo Sport (2001) F, Trooper (92-02) F, VehiCROSS (99-01) F
1AMV400374	Disc Brake Pad	A	364,040	Honda: Civic (92-95) R, Civic del Sol (93-97) R
1AMV301102	Disc Brake Pad	D	363,287	Acura: TL (09-14) F; Honda: Ridgeline (06-11) F
1AMV100700	Disc Brake Pad	B	360,563	Hyundai: Elantra (92-01) F, Sonata (89-03) F, Tiburon (97-01) F; Infiniti: G20 (95-96) F; Kia: Magentis (01-03) F, Optima (01-02) F; Nissan: Stanza (90-92) F
1AMV301447	Disc Brake Pad	D	357,864	Hyundai: Tucson (10-14) F; Kia: Sportage (11-14) F
1AMV400922	Disc Brake Pad	D	356,416	Cadillac: CTS (03-07) R, STS (05-11) R
1AMV201170	Disc Brake Pad	D	356,092	BMW: 328i xDrive (09-13) R, 330Ci (2006) R, 330i (2006) R, 335d (09-11) R, 335i (07-11) R, 335i xDrive (09-13) R, 335is (11-12) R, 335xi (07-08) R, X1 (12-14) R
1AMV301156	Disc Brake Pad	D	354,250	Hyundai: Accent (06-11) F; Kia: Rio (06-11) F
1AMV500910	Drum Brake Shoe	D	354,250	Hyundai: Accent (06-11) R; Kia: Rio (06-11) R
1AMV300855	Disc Brake Pad	B	351,704	Nissan: Pathfinder (96-04) F
1AMV100725	Disc Brake Pad	D	346,893	BMW: 128i (12-13) F, 328i (2007) F, 328xi (2007) F, 330Ci (01-03) F, 330i (01-03) F, 330xi (01-03) F, 525i (01-10) F, 528i (97-00) F, Z4 (2008) F
1AMV100681	Disc Brake Pad	D	340,070	BMW: 530i (01-03) F, 540i (97-03) F, 740i (94-01) F, 740iL (94-01) F, M5 (02-03) F, X5 (00-06) F; Land Rover: Range Rover (03-05) F
1AMV300941	Disc Brake Pad	D	339,305	Hyundai: Elantra (02-05) F
1AMV301015	Disc Brake Pad	D	337,577	Infiniti: QX56 (04-06) F; Nissan: Armada (05-06) F, Titan (04-07) F
1AMV500729	Drum Brake Shoe	D	337,071	Toyota: Sienna (98-03) R
1AMV100727	Disc Brake Pad	B	336,821	Chevrolet: Malibu (97-99) F; Oldsmobile: Cutlass (97-99) F; Pontiac: Grand Am (1999) F
1AMV100830	Disc Brake Pad	B	331,477	Nissan: Xterra (00-04) F
1AMV301332	Disc Brake Pad	D	331,143	Cadillac: CTS (08-14) F, STS (09-11) F
1AMV100576	Disc Brake Pad	A	330,980	Mercury: Villager (93-02) F; Nissan: Quest (93-02) F
1AMV20922A	Disc Brake Pad	C	324,018	Pontiac: Grand Prix (05-08) R
1AMV400627	Disc Brake Pad	A	323,916	Ford: Mustang (94-98) R
1AMV300466	Disc Brake Pad	B	319,236	Ford: Aspire (94-97) F, Escort (91-96) F; Kia: Rio (01-02) F; Mazda: 323 (90-94) F, Protege (90-98) F; Mercury: Tracer (91-96) F
1AMV100939	Disc Brake Pad	D	318,974	Mini: Cooper (02-10) F
1AMV201060	Disc Brake Pad	D	318,974	Mini: Cooper (02-10) R
1AMV101331	Disc Brake Pad	A	317,139	Cadillac: CTS (08-14) F
1AMV401465	Disc Brake Pad	A	316,899	Ford: Mustang (11-14) R
1AMV500999	Drum Brake Shoe	D	313,218	Volkswagen: Jetta (11-12) R
1AMV401101	Disc Brake Pad	C	309,943	Nissan: Pathfinder (05-12) R
1AMV401122	Disc Brake Pad	D	307,882	Mercedes-Benz: GL320 (07-09) R, GL350 (10-12) R, GL450 (07-12) R, GL550 (08-12) R, ML320 (07-09) R, ML350 (06-11) R, ML500 (06-07) R, ML550 (08-11) R, R320 (07-09) R, R350 (06-11) R, R500 (06-07) R
1AMV300849	Disc Brake Pad	C	307,837	Ford: Thunderbird (02-05) F; Jaguar: S-Type (00-04) F, XJ8 (2004) F; Lincoln: LS (00-06) F
1AMV201020	Disc Brake Pad	D	299,901	Cadillac: CTS (06-07) R, SRX (04-09) R, STS (05-08) R
1AMV201473	Disc Brake Pad	B	296,868	BMW: 528i (11-14) R, 528i xDrive (12-14) R, 535d (2014) R, 535d xDrive (2014) R, 535i (11-14) R, 535i xDrive (11-14) R, ActiveHybrid 5 (12-14) R, X3 (11-14) R, Z4 (11-14) R
1AMV300862	Disc Brake Pad	D	296,848	Toyota: RAV4 (01-05) F
1AMV301178	Disc Brake Pad	C	296,767	Lexus: IS250 (06-15) F
1AMV301376	Disc Brake Pad	A	296,279	Ford: Flex (09-11) F, Taurus (10-11) F; Lincoln: MKS (09-11) F, MKT (10-11) F
1AMVS00814	Drum Brake Shoe	D	295,518	Chevrolet: Aveo (04-13) R; Pontiac: Wave (05-06) R
1AMV100912	Disc Brake Pad	D	295,136	Audi: A6 Quattro (00-04) F, Allroad Quattro (03-05) F, S4 (00-01) F, S6 (02-03) F; Volkswagen: Passat (02-04) F
1AMV10960A	Disc Brake Pad	A	293,817	Nissan: Sentra (04-06) F
1AMV31047A	Disc Brake Pad	C	291,721	Ford: Escape (2008) F; Mazda: Tribute (2008) F; Mercury: Mariner (2008) F
1AMV201067	Disc Brake Pad	A	290,138	Ford: F-250 Super Duty (2007) R, F-350 Super Duty (05-07) R
1AMV400806	Disc Brake Pad	B	290,132	Ford: Thunderbird (02-05) R; Jaguar: S-Type (00-02) R, Vanden Plas (2005) R, XJ8 (04-05) R; Lincoln: LS (00-06) R
1AMV100872	Disc Brake Pad	D	288,836	Mercedes-Benz: C230 (02-04) F, C240 (01-05) F, C280 (06-07) F, C320 (01-05) F, C350 (06-07) F, CLK320 (03-05) F, CLK350 (06-09) F, SLK280 (06-08) F
1AMV301295	Disc Brake Pad	B	286,358	Hyundai: Tucson (14-15) F; Kia: Cadenza (2014) F, Rondo (07-12) F, Sportage (11-14) F
1AMV201004	Disc Brake Pad	D	286,341	Saab: 9-2X (05-06) R; Subaru: Forester (04-08) R, Impreza (03-07) R
1AMV401021	Disc Brake Pad	D	284,100	Ford: Freestar (04-07) R; Mercury: Monterey (04-07) R; Volkswagen: Routan (09-12) R

**Buyer's Guide for National Business Center
All-Makes Magneti Marelli Offered by Mopar**

Product: Brakes

For Reference Only. See Application Guide for Actual Vehicle Application and Selection of Correct Part for Vehicle



Part Number	Part Description	National Popularity Ranking	Vehicles In Operations (VIO) Within National B.C.	Vehicle Applications
1AMV10915A	Disc Brake Pad	D	282,843	Audi: A4 (05-09) F, A4 Quattro (05-09) F, A6 (06-11) F, A6 Quattro (05-11) F, S4 (04-11) F
1AMV401093	Disc Brake Pad	C	280,970	Buick: Terraza (05-07) R; Chevrolet: Uplander (05-09) R; Pontiac: Montana (05-09) R
1AMV101308	Disc Brake Pad	C	280,189	Mini: Cooper (08-15) F
1AMV201309	Disc Brake Pad	D	280,189	Mini: Cooper (08-15) R
1AMV200989	Disc Brake Pad	D	278,956	Chevrolet: Express 3500 (03-14) R; GMC: Savana 3500 (03-08) R
1AMV300619	Disc Brake Pad	D	276,300	Lexus: GS300 (93-05) F, GS400 (98-00) F, GS430 (01-05) F, IS300 (01-05) F, SC430 (02-10) F; Toyota: Supra (93-98) F
1AMV301454	Disc Brake Pad	C	272,956	Ford: Fiesta (11-15) F
1AMVS00756	Drum Brake Shoe	D	266,892	Nissan: Altima (99-01) R
1AMV100740	Disc Brake Pad	D	266,264	Mercedes-Benz: CLK320 (98-02) F, CLK430 (99-03) F, E300 (98-99) F, E320 (96-02) F, E420 (1997) F, E430 (98-02) F, SLK320 (02-04) F
1AMV101241	Disc Brake Pad	D	265,605	Jaguar: S-Type (06-08) F, Vanden Plas (06-08) F, XF (09-10) F, XJ8 (06-09) F, XK (07-09) F; Land Rover: LR2 (12-14) F, Range Rover Evoque (12-15) F; Volvo: S60 (11-15) F, S80 (07-15) F, V70 (08-10) F, XC70 (08-15) F
1AMV300722	Disc Brake Pad	B	263,969	Subaru: Impreza (97-01) F, Legacy (97-01) F
1AMV301074	Disc Brake Pad	D	260,838	Kia: Spectra (04-09) F
1AMVS00736	Drum Brake Shoe	D	257,497	Ford: Contour (97-00) R; Mercury: Cougar (99-02) R, Mystique (98-00) R
1AMV10555A	Disc Brake Pad	D	255,604	Audi: A4 (96-99) F, A4 Quattro (96-99) F; Volkswagen: Golf (96-99) F, Jetta (96-99) F, Passat (95-99) F
1AMV400771	Disc Brake Pad	C	254,299	Lexus: GS300 (98-05) R, GS400 (98-00) R, GS430 (01-05) R, IS300 (01-05) R, SC430 (02-10) R
1AMV10403Y	Disc Brake Pad	B	252,307	Volvo: 850 (93-97) F, C70 (98-04) F, S70 (98-00) F, V70 (98-00) F
1AMV301345	Disc Brake Pad	A	249,775	Nissan: Versa (09-11) F
1AMV200603	Disc Brake Pad	C	249,569	Mercedes-Benz: 300SD (92-93) R, 300SE (92-93) R, 400SE (1992) R, 400SEL (1993) R, E300 (98-99) R, E320 (94-02) R, E420 (1997) R, E430 (98-02) R, S320 (94-99) R, S350 (94-95) R, S420 (94-99) R
1AMV200779	Disc Brake Pad	C	248,356	Mercedes-Benz: C230 (99-04) R, C240 (01-05) R, C280 (96-00) R, E300 (96-97) R, SLK230 (98-04) R, SLK280 (06-08) R, SLK320 (01-04) R
1AMV100801	Disc Brake Pad	B	246,167	Ford: Contour (98-00) F; Mercury: Cougar (99-02) F, Mystique (98-00) F
1AMV101240	Disc Brake Pad	A	241,555	Jaguar: S-Type (06-08) F, Super V8 (06-08) F, XF (09-15) F, XJ (11-15) F, XJR (06-09) F, XK (12-15) F, XKR (07-08) F; Volvo: S60 (11-15) F, S80 (07-15) F, V70 (09-10) F, XC70 (09-15) F
1AMV100979	Disc Brake Pad	D	241,350	Volvo: S60 (08-09) F, XC90 (03-14) F
1AMV301202	Disc Brake Pad	B	237,892	Hyundai: Entourage (07-08) F; Kia: Sedona (06-14) F
1AMV201099	Disc Brake Pad	D	237,302	Land Rover: LR3 (05-09) R, LR4 (10-15) R, Range Rover (06-12) R, Range Rover Sport (06-13) R
1AMV30556X	Disc Brake Pad	C	236,404	Chevrolet: Tracker (98-04) F; Geo: Tracker (96-97) F; Suzuki: Sidekick (91-98) F, Vitara (99-04) F
1AMV100556	Disc Brake Pad	C	236,404	Chevrolet: Tracker (98-04) F; Geo: Tracker (96-97) F; Suzuki: Sidekick (91-98) F, Vitara (99-04) F
1AMV400584	Disc Brake Pad	B	235,548	Ford: Probe (93-97) R; Mazda: 626 (93-02) R, MX-6 (93-97) R
1AMVS00667	Drum Brake Shoe	D	235,548	Ford: Probe (93-97) R; Mazda: 626 (93-02) R, MX-6 (93-97) R
1AMVS00744	Drum Brake Shoe	D	234,724	Honda: Odyssey (99-01) R
1AMVS00738	Drum Brake Shoe	D	234,278	Chevrolet: Tracker (99-04) R; Suzuki: Grand Vitara (99-05) R, Vitara (99-04) R
1AMVS00735	Drum Brake Shoe	C	234,056	Honda: Passport (96-02) R; Isuzu: Amigo (98-00) R, Axiom (02-04) R, Rodeo (99-04) R, Rodeo Sport (01-03) R
1AMV401037	Disc Brake Pad	D	232,908	Mitsubishi: Lancer (04-14) R, Outlander (05-06) R
1AMV100987	Disc Brake Pad	B	231,548	Mercedes-Benz: E320 (03-09) F, E350 (06-09) F
1AMV300440	Disc Brake Pad	A	230,688	Hyundai: Accent (95-05) F, Excel (87-94) F, Scoupe (91-95) F, Stellar (1987) F; Mitsubishi: Precis (87-93) F
1AMV101022	Disc Brake Pad	D	228,831	Ford: Freestar (04-07) F; Mercury: Monterey (04-07) F
1AMV301401	Disc Brake Pad	C	227,916	Toyota: Venza (09-15) F
1AMV401402	Disc Brake Pad	C	227,916	Toyota: Venza (09-15) R
1AMV101003	Disc Brake Pad	D	222,142	Volvo: XC90 (03-14) F
1AMV200980	Disc Brake Pad	D	222,142	Volvo: XC90 (03-14) R
1AMV41040A	Disc Brake Pad	B	219,890	Ford: Ranger (10-11) R; Lincoln: Town Car (09-11) R; Mercury: Grand Marquis (09-11) R
1AMV300749	Disc Brake Pad	D	219,556	Chevrolet: Camaro (98-02) F; Pontiac: Firebird (98-02) F
1AMV400750	Disc Brake Pad	C	219,556	Chevrolet: Camaro (98-02) R; Pontiac: Firebird (98-02) R
1AMV10934A	Disc Brake Pad	C	215,967	Ford: Expedition (05-06) F; Lincoln: Navigator (05-06) F
1AMV20935A	Disc Brake Pad	C	215,967	Ford: Expedition (05-06) R; Lincoln: Navigator (05-06) R
1AMV400672	Disc Brake Pad	C	214,672	Toyota: Avalon (95-99) R
1AMV100648	Disc Brake Pad	B	214,613	Ford: Contour (95-00) F; Mercury: Mystique (95-00) F
1AMV101278	Disc Brake Pad	A	211,704	Ford: Expedition (07-09) F; Lincoln: Navigator (07-10) F
1AMV20709A	Disc Brake Pad	D	209,441	Cadillac: Catera (97-01) R; Saab: 9-3 (99-03) R, 900 (97-98) R; Saturn: L300 (01-05) R, LS2 (2000) R, LW2 (2000) R, LW200 (01-03) R, LW300 (01-03) R
1AMV100977	Disc Brake Pad	C	205,696	Audi: Q7 (07-15) F; Porsche: Cayenne (03-10) F; Volkswagen: Touareg (04-10) F
1AMV200978	Disc Brake Pad	D	205,696	Audi: Q7 (07-15) R; Porsche: Cayenne (03-10) R; Volkswagen: Touareg (04-10) R
1AMV100867	Disc Brake Pad	C	203,979	Honda: Passport (2002) F; Isuzu: Rodeo (02-04) F, Rodeo Sport (02-03) F; Mazda: MPV (92-93) F; Mitsubishi: Endeavor (04-11) F, Montero (01-06) F
1AMV30855X	Disc Brake Pad	B	203,278	Acura: MDX (03-06) F
1AMV30815B	Disc Brake Pad	A	202,723	Infiniti: G20 (00-02) F; Nissan: Maxima (02-03) F; Suzuki: SX4 (08-12) F

**Buyer's Guide for National Business Center
All-Makes Magneti Marelli Offered by Mopar
Product: Brakes**



For Reference Only. See Application Guide for Actual Vehicle Application and Selection of Correct Part for Vehicle

Part Number	Part Description	National Popularity Ranking	Vehicles In Operations (VIO) Within National B.C.	Vehicle Applications
1AMVF10184	Disc Brake Pad	B	201,288	Chevrolet: C3500 (94-02) F, P30 (97-99) F; GMC: C3500 (94-00) F, P3500 (97-99) F
1AMV101392	Disc Brake Pad	A	192,948	Ford: F-150 (2009) F
1AMVS00763	Drum Brake Shoe	D	187,141	Kia: Sephia (95-01) R, Spectra (00-04) R
1AMVS00739	Drum Brake Shoe	D	186,331	Mazda: Protege (99-03) R
1AMVF11611	Disc Brake Pad	C	185,322	Ford: Police Interceptor Sedan (13-15) F, Police Interceptor Utility (13-15) F, Taurus (13-15) F
1AMVF21612	Disc Brake Pad	C	185,322	Ford: Police Interceptor Sedan (13-15) R, Police Interceptor Utility (13-15) R, Taurus (13-15) R
1AMV201307	Disc Brake Pad	D	183,978	Land Rover: Range Rover Evoque (12-15) R; Volvo: S80 (10-11) R, V70 (08-10) R, XC60 (10-15) R, XC70 (08-15) R
1AMV100946	Disc Brake Pad	A	182,940	BMW: 125i (12-13) F, 330Ci (04-06) F, 330i (04-05) F, 330xi (04-05) F, X3 (04-10) F
1AMV301394	Disc Brake Pad	B	182,598	Honda: Fit (09-11) F
1AMV301118	Disc Brake Pad	A	179,291	Lexus: GS350 (07-14) F, GS430 (06-07) F, GS450h (07-11) F, GS460 (08-11) F, IS350 (06-14) F
1AMV10915C	Disc Brake Pad	D	178,036	Volkswagen: CC (09-11) F, Passat (06-08) F, R32 (2008) F
1AMV100704	Disc Brake Pad	B	177,954	Volkswagen: Cabrio (95-02) F, Golf (92-99) F, Jetta (93-98) F
1AMV301593	Disc Brake Pad	C	176,690	Hyundai: Accent (2012) F; Kia: Rio (12-14) F
1AMV200733	Disc Brake Pad	B	172,720	Mitsubishi: Montero Sport (97-04) R
1AMVS00728	Drum Brake Shoe	D	172,720	Mitsubishi: Montero Sport (97-04) R
1AMV101409	Disc Brake Pad	D	169,748	BMW: 335i GT xDrive (2014) F, 528i (12-14) F, 535i (11-14) F, 535i GT (10-14) F, 535i GT xDrive (11-14) F, 550i (10-14) F, 550i GT (10-14) F, 550i GT xDrive (11-14) F, 550i xDrive (11-14) F, 650i (12-14) F, 650i Gran Coupe (13-14) F, 650i xDrive (12-14) F, 650i xDrive Gran Coupe (13-14) F, 740i (11-14) F, 740Li (11-14) F, 740Li xDrive (13-14) F, 750i (09-14) F, 750i xDrive (10-14) F, 750Li (09-14) F, 750Li xDrive (10-14) F, ActiveHybrid 7 (13-14) F
1AMV10855A	Disc Brake Pad	B	168,768	Nissan: Quest (04-09) F
1AMV300904	Disc Brake Pad	D	167,426	Mitsubishi: Lancer (02-07) F
1AMVS00778	Drum Brake Shoe	D	167,426	Mitsubishi: Lancer (02-07) R
1AMV301413	Disc Brake Pad	C	167,060	Kia: Optima (11-12) F
1AMV31295X	Disc Brake Pad	B	166,652	Hyundai: Tucson (10-13) F
1AMV101121	Disc Brake Pad	B	162,167	Mercedes-Benz: C230 (05-07) F, C320 (2005) F, C350 (06-07) F, CLK350 (06-09) F, SLK280 (06-08) F, SLK350 (06-11) F
1AMV400892	Disc Brake Pad	D	159,540	Mazda: Protege (01-03) R, Protege5 (02-03) R
1AMV100957	Disc Brake Pad	D	159,499	Mazda: 6 (03-05) F
1AMV11061A	Disc Brake Pad	C	159,187	BMW: 120i (07-12) F, 125i (09-10) F, 128i (08-11) F, 323i (06-07) F, 325i (2006) F, 325xi (2006) F, 330i (2006) F, 330xi (2006) F, Z4 (09-14) F
1AMV10918B	Disc Brake Pad	C	158,346	BMW: 335d (09-11) F, 335i (07-11) F, 335i xDrive (09-13) F, 335is (11-12) F, 335xi (07-08) F, Z4 (11-14) F
1AMV400613	Disc Brake Pad	C	153,482	Lexus: GS300 (93-97) R, LS400 (93-00) R, SC300 (92-00) R, SC400 (92-00) R; Toyota: Supra (93-98) R
1AMVS00959	Drum Brake Shoe	D	150,054	Chevrolet: Colorado (09-12) R; GMC: Canyon (09-12) R
1AMV100970	Disc Brake Pad	C	146,370	Ford: Transit Connect (10-13) F
1AMVS00974	Drum Brake Shoe	C	146,370	Ford: Transit Connect (10-13) R
1AMV100635	Disc Brake Pad	D	146,113	Mazda: Miata (94-05) F
1AMV100972	Disc Brake Pad	D	142,881	Saab: 9-3 (03-11) F, 9-3X (10-11) F
1AMVS00872	Drum Brake Shoe	D	142,359	Kia: Sedona (03-05) R
1AMV300680	Disc Brake Pad	B	135,693	Suzuki: Grand Vitara (99-05) F, Sidekick (96-98) F, XL-7 (02-04) F
1AMV300889	Disc Brake Pad	D	134,733	Kia: Sephia (2001) F, Spectra (01-04) F
1AMV301119	Disc Brake Pad	A	134,496	Hummer: H3 (06-10) F, H3T (09-10) F
1AMV101223	Disc Brake Pad	A	131,133	Mercedes-Benz: CL550 (07-14) F, CL600 (07-14) F, S350 (2012) F, S400 (10-12) F, S550 (07-14) F, S600 (07-13) F, SL550 (09-12) F
1AMV401562	Disc Brake Pad	B	129,962	Ford: Mustang (11-12) R
1AMV101098	Disc Brake Pad	C	128,926	Land Rover: LR3 (05-09) F, Range Rover (06-09) F, Range Rover Sport (06-09) F
1AMV401051	Disc Brake Pad	D	127,992	Toyota: RAV4 (04-05) R
1AMVS00357	Drum Brake Shoe	B	127,745	Ford: E-250 Econoline (1975) R, E-250 Econoline Club Wagon (1975) R, F-250 (86-89) R, F-250 Pickup (68-74) R
1AMV201120	Disc Brake Pad	B	127,646	Hummer: H3 (06-10) R
1AMV201348	Disc Brake Pad	D	123,641	Volkswagen: CC (09-15) R, Passat CC (09-10) R
1AMV100551	Disc Brake Pad	B	122,563	Mazda: MPV (92-03) F
1AMV400973	Disc Brake Pad	D	122,382	Mazda: 3 (04-05) R
1AMV200775	Disc Brake Pad	D	121,176	Kia: Sephia (98-00) R, Spectra (01-04) R
1AMV10830A	Disc Brake Pad	B	118,791	Nissan: Frontier (03-04) F
1AMVS00754	Drum Brake Shoe	D	112,128	Toyota: Echo (00-05) R
1AMV300798	Disc Brake Pad	B	106,681	Mazda: Protege (99-01) F
1AMV400773	Disc Brake Pad	C	105,221	Lexus: LX470 (98-07) R; Toyota: Land Cruiser (98-07) R
1AMV100774	Disc Brake Pad	C	104,426	Kia: Sportage (98-02) F
1AMVS00694	Drum Brake Shoe	D	103,925	Hyundai: Accent (00-02) R, Excel (91-94) R, Scoupe (92-95) R; Mitsubishi: Precis (91-93) R
1AMV301113	Disc Brake Pad	C	99,889	Lexus: GS300 (2006) R, GS350 (07-11) R, GS430 (06-07) R, GS450h (07-11) R, GS460 (08-11) R
1AMV100682	Disc Brake Pad	C	94,696	Audi: TT Quattro (04-06) F; BMW: 750Li (95-01) F, Z8 (01-03) F; Mercedes-Benz: C43 AMG (99-00) F, CLK55 AMG (01-02) F, E55 AMG (99-02) F, S430 (03-06) F, S500 (03-06) F, SLK32 AMG (02-04) F, SLK320 (02-04) F; Volkswagen: Golf (2004) F

**Buyer's Guide for National Business Center
All-Makes Magneti Marelli Offered by Mopar**

Product: Brakes

For Reference Only. See Application Guide for Actual Vehicle Application and Selection of Correct Part for Vehicle



Part Number	Part Description	National Popularity Ranking	Vehicles In Operations (VIO) Within National B.C.	Vehicle Applications
1AMV20493A	Disc Brake Pad	D	94,631	Land Rover: Discovery (99-04) R, Range Rover (96-02) R
1AMV41108Y	Disc Brake Pad	C	91,285	Volkswagen: Passat (06-07) R, R32 (2008) R
1AMV101257	Disc Brake Pad	B	88,884	Saab: 9-3 (05-11) F
1AMV100837	Disc Brake Pad	D	85,578	Volvo: S40 (00-04) F, V40 (00-04) F
1AMV101504	Disc Brake Pad	D	85,343	BMW: 528i (11-14) F, 528i xDrive (12-14) F
1AMV300910	Disc Brake Pad	C	84,720	Jaguar: X-Type (02-08) F
1AMV300930	Disc Brake Pad	D	84,068	Lexus: RX300 (02-03) F
1AMVF21317	Disc Brake Pad	W	83,418	Freightliner: Sprinter 2500 (07-14) R, Sprinter 3500 (07-14) R; Mercedes-Benz: Sprinter 2500 (10-14) R, Sprinter 3500 (10-14) R
1AMV101045	Disc Brake Pad	D	82,066	Ford: E-150 (04-07) F, E-150 Club Wagon (04-05) F
1AMV201046	Disc Brake Pad	D	82,066	Ford: E-150 (04-07) R, E-150 Club Wagon (04-05) R
1AMV201314	Disc Brake Pad	D	79,476	Land Rover: LR2 (08-14) R; Volvo: S80 (07-15) R
1AMV100710	Disc Brake Pad	D	76,742	Mercedes-Benz: C230 (99-00) F, E300 (96-97) F, SLK230 (98-04) F, SLK320 (2001) F
1AMV400481	Disc Brake Pad	C	70,442	Infiniti: J30 (93-97) R, M45 (03-04) R, Q45 (90-06) R
1AMV101188	Disc Brake Pad	D	67,514	Suzuki: Grand Vitara (06-13) F
1AMVS00789	Drum Brake Shoe	D	67,001	Kia: Sedona (02-03) R
1AMV31454A	Disc Brake Pad	C	58,497	Mazda: 2 (11-14) F
1AMV101009	Disc Brake Pad	D	57,995	Mazda: RX-8 (04-11) F
1AMV40365X	Disc Brake Pad	A	57,765	Acura: CL (97-99) R
1AMV301273	Disc Brake Pad	A	57,732	Volkswagen: Routan (09-14) F
1AMV100915	Disc Brake Pad	D	57,676	Audi: A6 Quattro (02-04) F, Allroad Quattro (01-05) F, S4 (2002) F
1AMV300649	Disc Brake Pad	B	53,415	Kia: Sephia (94-00) F, Spectra (2000) F
1AMV200848	Disc Brake Pad	B	50,434	Mercedes-Benz: CL55 AMG (01-02) R, CL600 (01-02) R, S430 (2002) R, S500 (00-02) R, S55 AMG (2002) R, S600 (01-03) R
1AMV101038	Disc Brake Pad	D	45,918	Mazda: MPV (04-06) F
1AMV201073	Disc Brake Pad	D	45,918	Mazda: MPV (04-06) R
1AMVF10411	Disc Brake Pad	A	45,047	Ford: F Super Duty (88-97) F, F53 (88-97) F, F59 (88-97) F
1AMV201352	Disc Brake Pad	C	43,880	Chevrolet: Caprice (11-14) R; Pontiac: G8 (08-09) R
1AMVF11352	Disc Brake Pad	C	43,880	Chevrolet: Caprice (11-14) R; Pontiac: G8 (08-09) R
1AMV100938	Disc Brake Pad	C	41,717	Jaguar: S-Type (03-05) F, Super V8 (2005) F, Vanden Plas (2004) F, XJR (04-05) F
1AMV301351	Disc Brake Pad	C	35,943	Pontiac: G8 (08-09) F
1AMV100937	Disc Brake Pad	D	34,833	Suzuki: Aerio (02-05) F
1AMVF11316	Disc Brake Pad	W	34,142	Freightliner: Sprinter 2500 (07-12) F; Mercedes-Benz: Sprinter 2500 (10-12) F
1AMV10840A	Disc Brake Pad	D	33,037	Saab: 9-5 (05-10) F; Volvo: C70 (98-02) F
1AMV401048	Disc Brake Pad	D	32,164	Pontiac: GTO (04-06) R
1AMV41259A	Disc Brake Pad	D	31,918	Mazda: CX-9 (2012) R
1AMV100831	Disc Brake Pad	D	31,209	Toyota: Echo (2000) F
1AMVF21318	Disc Brake Pad	W	26,346	Freightliner: Sprinter 3500 (07-14) R; Mercedes-Benz: Sprinter 3500 (10-14) R
1AMV400964	Disc Brake Pad	C	26,053	Ford: Explorer Sport Trac (09-10) R; Mercury: Mountaineer (09-10) R
1AMVF11693	Disc Brake Pad	W	22,928	Freightliner: Sprinter 2500 (13-14) F; Mercedes-Benz: Sprinter 2500 (13-14) F
1AMVF11699	Disc Brake Pad	W	22,779	Freightliner: Sprinter 3500 (12-14) F; Mercedes-Benz: Sprinter 3500 (11-14) F
1AMV20984A	Disc Brake Pad	B	22,763	Mercedes-Benz: CL55 AMG (03-05) R, CL600 (03-06) R, CL65 AMG (05-06) R, CLS55 AMG (2006) R, E55 AMG (2004) R, S55 AMG (03-06) R, S600 (03-06) R, S65 AMG (05-06) R, SL55 AMG (03-04) R, SL600 (04-07) R, SL65 AMG (05-07) R, SLK55 AMG (05-10) R
1AMV100968	Disc Brake Pad	C	20,115	Jaguar: Vanden Plas (02-03) F, XJR (02-03) F, XK8 (00-02) F, XKR (00-06) F
1AMV301385	Disc Brake Pad	B	19,885	Kia: Borrego (09-11) F
1AMV301105	Disc Brake Pad	D	19,022	Suzuki: XL-7 (05-06) F
1AMV301589	Disc Brake Pad	B	12,920	Volkswagen: Routan (12-14) F
1AMV401596	Disc Brake Pad	B	12,920	Volkswagen: Routan (12-14) R
1AMVF11268	Disc Brake Pad	W	3,566	Freightliner: Sprinter 3500 (07-11) F; Mercedes-Benz: Sprinter 3500 (2010) F
1AMV201330	Disc Brake Pad	D	310,000	Ford: E-450 Super Duty (08-14) R
1AMVF21330	Disc Brake Pad	D	310,000	Ford: E-450 Super Duty (08-14) R
1AMVF10777	Disc Brake Pad	B	72,390	Ford: F-450 Super Duty (99-04) F, F-550 Super Duty (99-04) F, F53 (99-04) F